

CITY OF STEINBACH

EMERGENCY MEASURES PLAN

BOOK 5

**Hazard Analysis
&
Response Plan**

Table of Contents

Section 1 - Hazardous Product Fire

Section 2 - Hazardous Products Spill

Section 3 - Explosives Hazard

Section 4 - Dangerous Goods Routes

Section 5 - Winter Storm Hazard

Section 6 - Severe Summer Storm / Tornado

Section 7 - Institutional Evacuations

City of Steinbach Boundary Map



City of Steinbach

Emergency Measures Plan

Section 1 – Hazard Analysis

HAZARDOUS PRODUCTS FIRE

**The City of Steinbach
Hazard Analysis**

HAZARDOUS PRODUCTS FIRE

Nature of Hazard:

An accidental or purposely set fire where the presence of products hazardous to the health and safety of the 1st Response Units, the Public-at-large or the Environment is present at the fire scene or beyond through dispersal of gases, liquids or solids through smoke or drainage dispersal.

The involvement of EMO would be based on the nature of the product and the potential for dispersal beyond the fire scene. Climatic condition would have a dramatic impact on making the decision to access resources beyond 1st Response Units and municipal operating personnel.

The City of Steinbach Emergency Measures Plan
 Book 5 – Hazard Analysis and Response Plans
 Page 6 of 84

Type of Issue: Hazardous Products Fire

Location	Product(s)	Life Safety Issue(s)	Service Requirement(s)
Co-op Bulk Storage & Card lock 365 PTH North (PTH12 & Clearspring Rd.)	- (16) 80,000 liter Gas & Diesel Storage Tanks/ (1000) 200 liter barrels of oil	- Explosion - Gas & Smoke dispersal - Environmental Contamination	- Evacuation - Industrial area - Municipal Infrastructure
Terraflex AG Services Warehouse 385 PTH 12 North Have Their own Emergency Response Plan	1500 Tonne Fertilizer storage shed (nitrogen, phosphate, potash, sulpher) 50 pallets e/w 400 liters of various chemicals in Chemical shed	- Explosion - Gas & Smoke dispersal - Environmental Contamination	- Evacuation Industrial area Commercial area east & west of Hwy 12
ESSO Card lock PTH12 N Closed May 2009. No Product left on site but storage tanks still there.	- (2) 5000 gal.(19000Liter) Underground Diesel only	- Explosion - Gas & Smoke dispersal - Environmental Contamination	- Evacuation - Industrial area - Property Damage
Dawson Road Transfer 21 Clear Springs Rd. East	Various Products dependant on what is being transported and/or stored	- Explosion - Gas & Smoke dispersal - Environmental Contamination	- Evacuation Industrial Area - Municipal Infrastructure
Big Freight Systems 360 Hwy 12 N	Various Products dependant on what is being transported and/or stored	- Explosion - Gas & Smoke dispersal - Environmental Contamination	- Evacuation Industrial Area - Municipal Infrastructure
Steinbach Airport Golfair Road	3000gal (12,000L) Aviation gas in above ground tank – PIN# 1863. Chemicals for Crop Spraying dependant on season stored in trailers or hangers	- Explosion - Gas & Smoke dispersal - Environmental Contamination	- Evacuation Industrial Area Residential & Commercial area - Municipal Infrastructure
Clearspring Shopping Centre Hwy 12 North	Size of building complex and contents from clothing & electronics to paints etc.	- Gas & Smoke dispersal - Environmental Contamination	- Evacuation Industrial Area Residential & Commercial area - Municipal Infrastructure
Aquatic Center- 330 Park Rd. East Steinbach Pump house -515 Main St. Steinbach water Tower - 660 Main	-(8) 150 lbs. Chlorine Cylinders -(15) 150 lbs. Chlorine Cylinders -(3) 150 lbs. Chlorine Cylinders	- Gas Dispersal - Environmental Contamination	- Evacuation - Senior Center - Commercial Sector - Residential Area - Municipal Infrastructure

The City of Steinbach Emergency Measures Plan
 Book 5 – Hazard Analysis and Response Plans
 Page 7 of 84

Type of Issue: Hazardous Products Fire

Location	Product(s)	Life Safety Issue(s)	Service Requirement(s)
Pioneer Grain Chemical Warehouse 34 Pioneer Road Have Their own Emergency Response Plan			
Loewen Windows 77 PTH 52 West Establishing their own Emergency Response Plan	9000 liters (10L containers) mixed chemicals in Chemical shed 1200 ton Nitrogen Fertilizer (46-0-0) 900 ton Phosphate Fertilizer (11-5-2) 400 ton Potash Fertilizer (0-0-60) 80 ton Sulpher Fertilizer (0-0-90)	<ul style="list-style-type: none"> - Gas & Smoke dispersal - Environmental Contamination 	<ul style="list-style-type: none"> - Evacuation <ul style="list-style-type: none"> - Industrial area - Loewen Windows, Kindale Industries, etc. - Steinbach Bible College - Commercial area - Residential Area
Penner International Inc 20 Hwy 12 N (Trailer Storage on Loewen Blvd)	Size of manufacturing plant and wood, plastic, varnish and paints used in manufacture would be hazardous in a fire	<ul style="list-style-type: none"> Gas & Smoke dispersal - Environmental Contamination 	<ul style="list-style-type: none"> Evacuation <ul style="list-style-type: none"> - Residential Area - 2 schools (Bible College & Elmdale) - Commercial & Industrial area - Property Damage - Municipal Infrastructure
	Various Products dependant on what is being transported and/or stored on site.	<ul style="list-style-type: none"> - Explosion - Gas & Smoke Dispersal Environmental Contamination 	<ul style="list-style-type: none"> Evacuation <ul style="list-style-type: none"> - Residential Area - 2 schools (Bible College & Elmdale) - Commercial & Industrial area - Property Damage - Municipal Infrastructure

The City of Steinbach Emergency Measures Plan
 Book 5 – Hazard Analysis and Response Plans
 Page 8 of 84

Type of Issue: Hazardous Products Fire

Location	Product(s)	Life Safety Issue(s)	Service Requirement(s)
Steinbach Hatchery & Feeds 231 Main St.	Feed & Grain Elevator Storage	Heavy Smoke and size of perimeter In Downtown Area	Evacuation: Schools Commercial/ Business area Hospital/ Senior Housing Residential Area
Derksen Printers 377 Main St.	- Isopropyl Alcohol - Solvents	- Gas & Smoke dispersal - Environmental Contamination	- Evacuation - Residential Area - Commercial /Business area - Senior Health Care Facility
Biovail Manufacturing Division 100 Life Sciences Parkway Have Their own Emergency Response Plan	- Various Chemicals - Solvents -Pharmaceuticals 50,000 L of ethyl alcohol in 4 above ground tanks	- Explosion Hazard - Gas & Smoke dispersal - Environmental Contamination	- Evacuation - Residential Area - Industrial Area - Municipal Infrastructure
Canadian Guide Rail Corp. 325 Hespler St.	Building size and location plus materials used in manufacturing	- Gas & Smoke dispersal - Environmental Contamination	- Evacuation - Residential Area - Industrial Area - Municipal Infrastructure
ESCO 62 Life Sciences Parkway	Building size and location plus materials used in manufacturing	-Gas & Smoke dispersal -Environmental Contamination	- Evacuation - Residential Area - Industrial Area - Municipal Infrastructure
WS Machining & Fabrication Inc. 49 Life Sciences Parkway	Building size and location plus materials used such as: Oxygen, Acetylene, Argone, Blueshield 6, Nitrogen, Methane, Carbon Dioxide	-Explosive Hazard -Gas & Smoke dispersal -Environmental Contamination	- Evacuation - Residential Area - Industrial Area - Municipal Infrastructure

The City of Steinbach Emergency Measures Plan
 Book 5 – Hazard Analysis and Response Plans
 Page 9 of 84

Type of Issue: Hazardous Products Fire

Mid Canada Millwork Ltd. 78 PTH 42 West	Size of manufacturing plant and wood, plastic, varnish and paints used in manufacture would be hazardous in a fire	Gas & Smoke dispersal - Environmental Contamination	Evacuation - Residential Area - 2 schools (Bible College & Elmdale) - Commercial & Industrail area - Property Damage - Municipal Infrastructure
Truck Traffic spill Hwy 12 & 52	- Various Products - Fuel(s) - Fertilizers (Anhydrous)	- Explosion - Gas & Smoke Dispersal - Environmental Contamination	Evacuation - Property Damage

Map # 1 – North City Limits south to Loewen Blvd.

Known Possible Hazard Sites:

- Site 1 CO-OP Bulk Services
- Site 2 Terraflex
- Site 3 Esso Card Lock
- Site 4 Dawson Road Transfer
- Site 5 Big Freight Systems
- Site 6 Steinbach Airport
- Site 7 Clearspring Shopping Centre
- Site 8 Steinbach Aquatic Centre
- Site 9
- Site 10 Pioneer Grains
- Site 11 Loewen Windows
- Site 12 Penner Transfer

Potential Resource Allocation:

- Police Services Site Security & Evacuation
- Health Services
 - ✓Hospital Treatment of Injured
 - ✓Ambulance Site Triage, Transportation, Specialty Evacuation
- Fire Services Fire Scene Operations
- Transportation & Operation Services
 - ✓Senior Facilities and Bethesda Hospital
 - ✓ Utility & Operations Personnel
 - ✓ School Division
 - ✓ Handi-Bus
- Emergency Social Services
 - ✓Accommodations
 - ✓Registration & Inquiry
 - ✓Secondary & Mobile R & I

Residential Concerns:

The nearest locations for city residential populations are approximately 0.25 mile from the Airport but surround some of the sites from Loewen Boulevard east of Hwy 12 to Old Tom Road and north to Park Rd. These residential development areas include Stone Bridge Crossing, Penfeld Estates, Northview Development and Clearsprings Greens. There were 1520 residents in this area at the 2006 census but expansion in this area is very rapid and there may be as many as 1700 people living there as of 2008.

Facility Concerns:

Mennonite Heritage Village
Steinbach Aquatic Center
Clearspring Mall Shopping Center & adjacent businesses.
Industrial District west of Hwy 12 and south of Park Rd.

Maplewood Manor - See Evacuation section of Emergency Plan for occupancy numbers. (no emergency stand-by generator)

Approximately 10% of the residents are non-ambulant. In some situations the residents may require the provision of Specialty Services and Specialty Meals.

Bethesda Place - See Evacuation section of Emergency Plan for occupancy numbers.

Bethesda Hospital - See Evacuation section of Emergency Plan for occupancy numbers.

These above Institutions would require a tremendous level of assistance during an evacuation due to the fact that approximately 40% of the residents are non-ambulant. In some situations the residents may require the provision of Specialty Services and Specialty Meals. **These sites are covered under the SERHA emergency plan; our mandate would be to assist as required.**

Elmdale School - See Evacuation section of Emergency Plan for occupancy numbers. (emergency plan in place)

Steinbach Christian High School / Bible College - See Evacuation section of Emergency Plan for occupancy numbers.

Eastman Education Centre - See Evacuation section of Emergency Plan for occupancy numbers. (emergency plan in place)

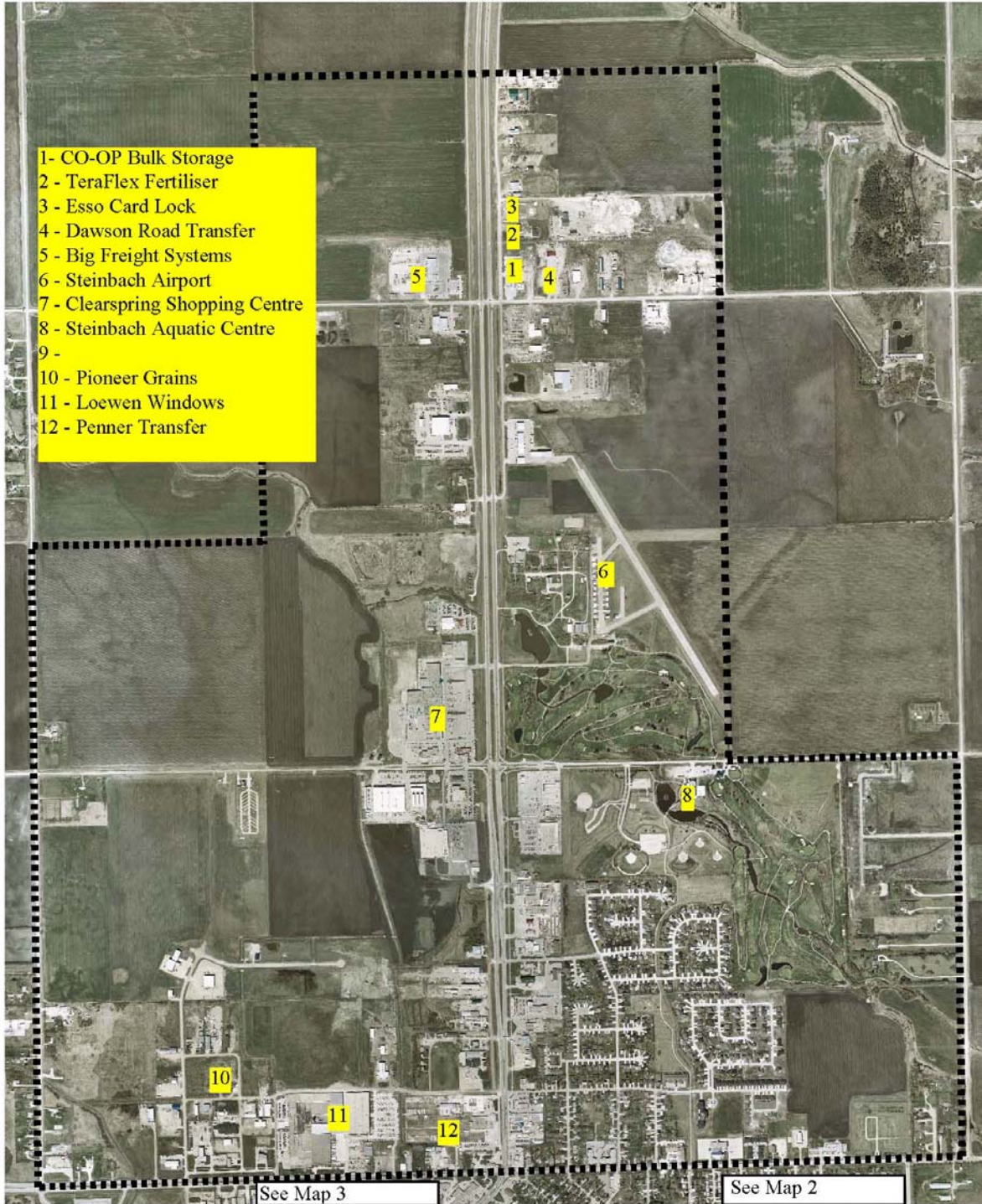
Environmental Concerns:

The level of environmental concern relates to two (2) primary issues:

- Control of a spill & water run off to Prevent Environmental Contamination
- Control of a spill & water run off to Prevent Municipal Infrastructure Contamination
- Involvement of Manitoba Environment for assistance and monitoring air quality

The City of Steinbach Emergency Measures Plan
Book 5 – Hazard Analysis and Response Plans

Map 1
North City Limits to
Lowewen Boluevard



Map # 2 – Hwy 12 to east City Limits, from Loewen Blvd. to south City Limits

Known Possible Hazard Sites:

- Site 1 Steinbach Hatchery
- Site 2 Derksen Printers
- Site 3 City Water Plant
- Site 4 City Water Tower
- Site 5 City Water Storage Facility
- Site 6 Biovail
- Site 7 Canadian Guide Rail
- Site 8 ESCO
- Site 9 WS Machining

Potential Resource Allocation:

- Police Services Site Security, Traffic Control, Evacuation
- Health Services
 - ✓ Hospital Treatment of injured
 - ✓ Ambulance Site Triage, Transportation
- Fire Services Fire Scene Operation
- Transportation & Operation Services
 - ✓ Senior Facilities and Apartment Facilities
 - ✓ Utility & Operations Personnel
 - ✓ School Division
 - ✓ Handi-Transit
 - ✓ Fairway Ford Bus Division
- Emergency Social Services
 - ✓ Accommodations
 - ✓ Registration & Inquiry
 - ✓ Primary R & I Site

Residential Concerns:

The City of Steinbach Emergency Measures Plan
Book 5 – Hazard Analysis and Response Plans

Page 14 of 84

- Bethesda Place - See Evacuation section of Emergency Plan for occupancy numbers.
- Bethesda Hospital - See Evacuation section of Emergency Plan for occupancy numbers.

These above Institutions would require a tremendous level of assistance during an evacuation due to the fact that approximately 40% of the residents are non-ambulant. In some situations the residents may require the provision of Specialty Services and Specialty Meals. **These sites are covered under the SERHA emergency plan; our mandate would be to assist as required.**

- Maplewood Manor - See Evacuation section of Emergency Plan for occupancy numbers. (no emergency stand-by generator)

Approximately 10% of the residents are non-ambulant. In some situations the residents may require the provision of Specialty Services and Specialty Meals

- Linden Place - See Evacuation section of Emergency Plan for occupancy numbers. (Diesel powered emergency generator)
- Fernwood Place See Evacuation section of Emergency Plan for occupancy numbers. (Diesel powered emergency generator)
- Parkview Apartments – See Evacuation section of Emergency Plan for occupancy numbers. (emergency lighting only)
- Cedarwood Supportive Housing – See Evacuation section of Emergency Plan for occupancy numbers. (emergency lighting only)
- Ashwood Apartments – See Evacuation section of Emergency Plan for occupancy numbers. (no emergency lighting)
- Birchwood Apartments - See Evacuation section of Emergency Plan for occupancy numbers. (no emergency lighting)

- Area east of hwy 12, to Hespler St. and south of Loewen Blvd, To Main St:
2006 population figures are approximately 2900 residents. These should be relatively close for 2008.
- Area east of hwy 12, to Hespler St. and south of Main St to south City Limits:
2006 population figures show 3480 residents. Expansion in this area is very rapid and there may be as many as 3600 people living in this area as of 2008.
- Area east of Hespler St. to City Limits and south of Loewen Blvd to South City Limits:
2006 population figures show 1030 residents. Expansion in this area is quite rapid and there may be as many as 1200 people living in this area as of 2008

- Downtown Commercial Core Unknown - time dependant

Facility Concerns:

- Elmdale School - See Evacuation section of Emergency Plan for occupancy numbers. (emergency plan in place)
- Woodlawn School – See Evacuation section of Emergency Plan for occupancy numbers. (emergency plan in place)
- Southwood School – See Evacuation section of Emergency Plan for occupancy numbers. (emergency plan in place)

Facility Concerns cont:

3/19/2010

The City of Steinbach Emergency Measures Plan
Book 5 – Hazard Analysis and Response Plans

Page 15 of 84

- Steinbach Regional – See Evacuation section of Emergency Plan for occupancy numbers. (emergency plan in place)
 - Steinbach Junior High - See Evacuation section of Emergency Plan for occupancy numbers. (emergency plan in place)
 - Happy Feet Early Learning Centre (462 Reimer Ave) - See Evacuation section of Emergency Plan for occupancy numbers. (emergency plan in place)
 - Kinder Korner Day Care Centre (307 Hanover) - See Evacuation section of Emergency Plan for occupancy numbers. (emergency plan in place)
 - Sweetheart Christian Daycare (12 HickorySt.) See Evacuation section of Emergency Plan for occupancy numbers.
 - Tiny Treasures Home Day Care (208 Hershfeld Rd) - See Evacuation section of Emergency Plan for occupancy numbers.
 - Steinbach Christian Preschool (360 McKenzie) - See Evacuation section of Emergency Plan for occupancy numbers.
 - Steinbach Curling Club - Primary concern is during the evenings and on weekends during the winter season
 - T G Smith Arena complex Primary concern is during the evenings and on weekends during the winter season
- Steinbach Downtown Business District

Environmental Concerns:

The level of Environmental concern relates to two (2) primary issues:

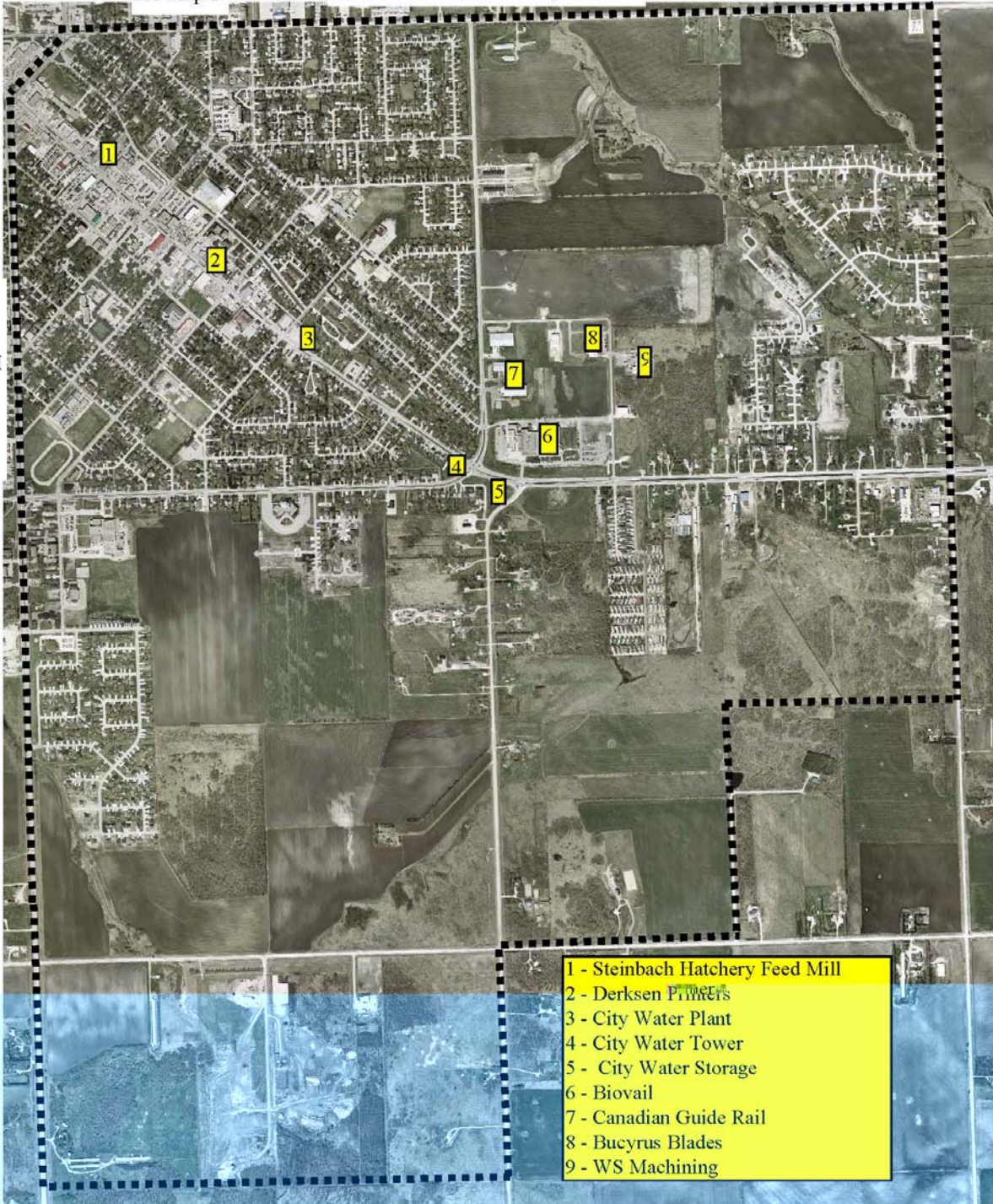
- Control of a spill and water runoff to Prevent Environmental Contamination
- Control of a spill and water runoff to Prevent Municipal Infrastructure Contamination
- Involvement of Manitoba Environment for assistance and monitoring air quality

The City of Steinbach Emergency Measures Plan
Book 5 – Hazard Analysis and Response Plans

Map 2
Hwy 12 to East City Limits, from
Loewen Blvd. to South City Limits

See Map 1

See
Map
3



- 1 - Steinbach Hatchery Feed Mill
- 2 - Derksen Pallets
- 3 - City Water Plant
- 4 - City Water Tower
- 5 - City Water Storage
- 6 - Biovail
- 7 - Canadian Guide Rail
- 8 - Bucyrus Blades
- 9 - WS Machining

Map # 3 – Hwy 12 to west City Limits from Loewen Blvd. to south City Limits

Known Potential Hazard Sites:

- Site 1 Mid Canada Millwork
- Site 2 Harv's Air (buildings are outside City limits but a runway extends into City limits)

Potential Resource Allocation:

- Police Services Site Security, Traffic Control, Evacuation
- Health Services
 - ✓Hospital Treatment of injured
 - ✓Ambulance Site Triage, Transportation
- Fire Services Fire Scene Operations
- Transportation & Operation Services
 - ✓Senior Facilities and Apartments
 - ✓School Facilities
 - ✓Single Family Residential Area
 - ✓School Division
 - ✓Fairway Ford Bus Division
 - ✓Personal Vehicles
- Emergency Social Services
 - ✓Accommodations
 - ✓Registration & Inquiry

Residential Concerns:

- Area west of Hwy 12 to west City Limits and south of Hwy 52 to south McKenzie Ave.: Population as of 2006 census was 1720 but expansion in this area has been rapid and there may be as many as 1800 people by 2008.
- Area west of hwy 12 to west City Limits and south of McKenzie to south City Limits: Population as of 2006 census was 600 people and the growth in this area is not as rapid. The figures are not expected to grow significantly for 2008.

Facility Concerns:

Rest Haven Nursing Home - See Evacuation Section of Emergency Plan for occupancy.

The above Institutions would require a tremendous level of assistance during an evacuation due to the fact that approximately 40% of the residents are non-ambulant. In some situations the residents may require the provision of Specialty Services and Specialty Meals. **These sites are covered under the SERHA emergency plan; our mandate would be to assist as required.**

- Woodhaven Manor – See Evacuation Section of Emergency Plan for occupancy.

The City of Steinbach Emergency Measures Plan
Book 5 – Hazard Analysis and Response Plans

Page 18 of 84

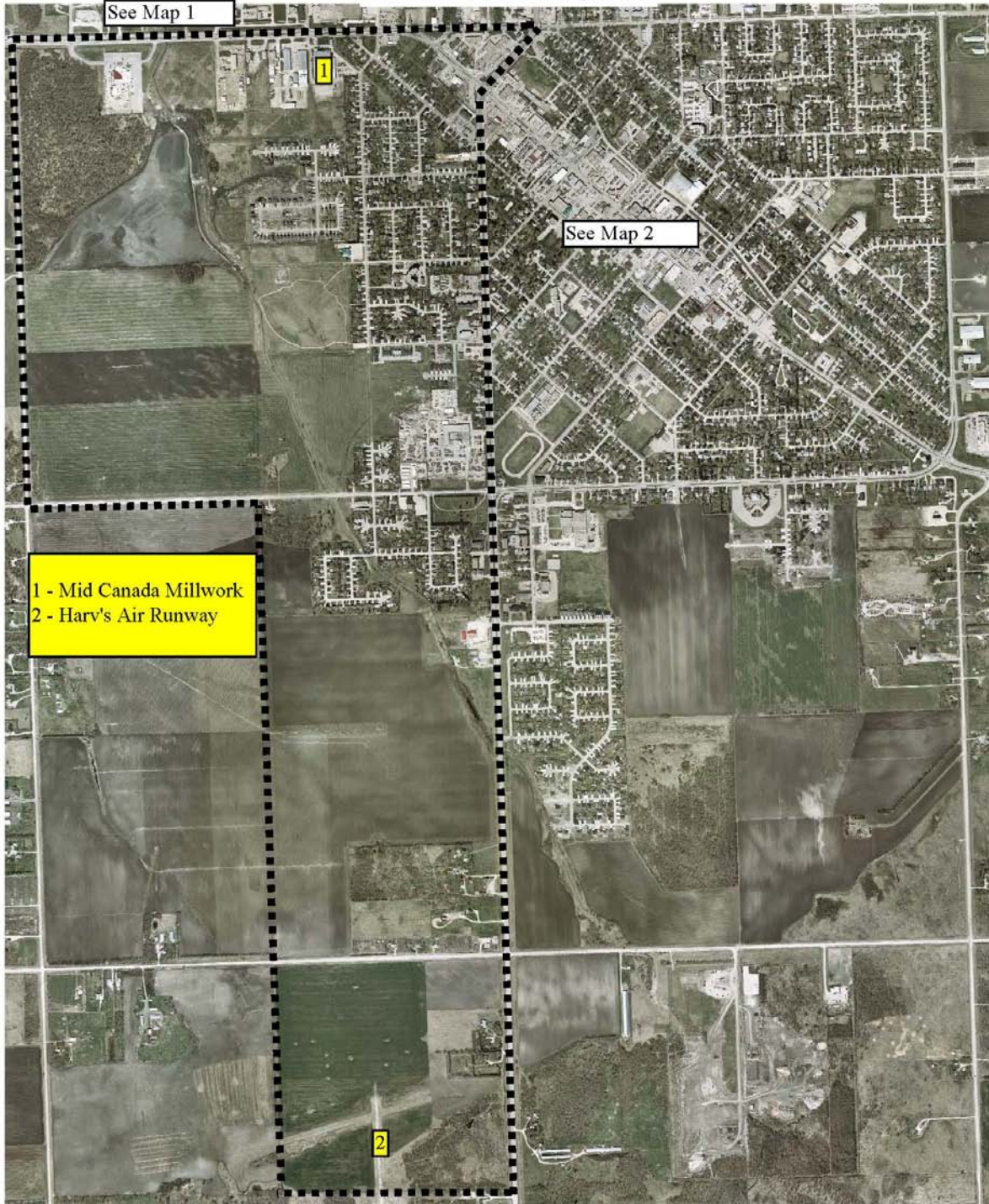
Environmental Concerns:

The level of Environmental concern relates to two (2) primary issues:

- Control of a spill & water run off to Prevent Environmental Contamination
- Control of a spill & water run off to Prevent Municipal Infrastructure Contamination
- Involvement of Manitoba Environment for assistance and monitoring air quality

The City of Steinbach Emergency Measures Plan
Book 5 – Hazard Analysis and Response Plans

Map 3
Hwy 12 to West City Limits from
Loewen Blvd. to South City Limits



City of Steinbach

Emergency Measures Plan

Section 2 – Hazard Analysis

HAZARDOUS PRODUCTS SPILL

**The City of Steinbach
Hazard Analysis**

HAZARDOUS PRODUCTS SPILL

Nature of Hazard:

An accidental or purposely split hazardous product could threaten human life or the environment primarily through dispersal as a gas or infiltration into the municipal drainage and utility infrastructure.

The nature, volatility or volume of the product would dictate the involvement of EMO. Climatic condition may also dictate the need involve resources beyond those immediately available to 1st Response and Municipal Response Units.

The City of Steinbach Emergency Measures Plan
 Book 5 – Hazard Analysis and Response Plans
 Page 22 of 84

Type of Issue: Hazardous Products Spill

Location	Product(s)	Life Safety Issue(s)	Service Requirement(s)
Co-op Bulk Storage & Card lock 365 PTH North (PTH12 & Clearspring Rd.)	- (16) 80,000 liter Gas & Diesel Storage Tanks/ (1000) 200 liter barrels of oil	- Explosion - Gas & Smoke dispersal - Environmental Contamination	- Evacuation - Industrial area - Municipal Infrastructure
ESSO Card lock PTH12 N Closed May 2009. No Product left on site but storage tanks still there	- (2) 5000 gal.(19000Liter) Underground Diesel only	- Explosion - Gas & Smoke dispersal - Environmental Contamination	- Evacuation - Industrial area - Property Damage
Terraflex AG Services Warehouse 385 PTH 12 North Have Their own Emergency Response Plan	1500 Tonne Fertilizer storage shed (nitrogen, phosphate, potash, sulpher) 50 pallets e/w 400 liters of various chemicals in Chemical shed	- Explosion - Gas & Smoke dispersal - Environmental Contamination	- Evacuation - Industrial area Commercial area - Big Freight Trucking
Pioneer Grain Chemical Warehouse 34 Pioneer Road Have Their own Emergency Response Plan	9000 liters (10 l containers) mixed chemicals in Chemical shed 1200 ton Nitrogen Fertilizer (46-0-0) 900 ton Phosphate Fertilizer (11-5-2) 400 ton Potash Fertilizer (0-0-60) 80 ton Sulpher Fertilizer (0-0-90)	- Gas & Smoke dispersal - Environmental Contamination	- Evacuation - Industrial area - Loewen Windows, Kindale Industries, etc. - Steinbach Bible College - Commercial area - Residential Area

The City of Steinbach Emergency Measures Plan
 Book 5 – Hazard Analysis and Response Plans
 Page 23 of 84

Type of Issue: Hazardous Products Spill

Location	Product(s)	Life Safety Issue(s)	Service Requirement(s)
Derksen Printers	<ul style="list-style-type: none"> - Isopropyl Alcohol - Solvents 	<ul style="list-style-type: none"> - Gas & Smoke dispersal - Environmental Contamination 	<ul style="list-style-type: none"> - Evacuation - Residential Area - Commercial /Business area - Senior Health Care Facility -
Steinbach Pump house -515 Main St. Steinbach water Tower - 660 Main Aquatic Center – 330 Park Rd. East	<ul style="list-style-type: none"> - (15) 150 lbs. Chlorine Cylinders - (3) 150 lbs. Chlorine Cylinders - (8) 150 lbs. Chlorine Cylinders 	<ul style="list-style-type: none"> - Gas Dispersal - Environmental Contamination 	<ul style="list-style-type: none"> - Evacuation - Senior Center - Commercial Sector - Municipal Infrastructure
Biovail Manufacturing Division 100 Life Sciences Parkway Have Their own Emergency Response Plan	<ul style="list-style-type: none"> -Various Chemicals -Solvents -Pharmaceuticals - 50,000 L of Ethyl Alcohol in 4 above ground tanks. 	<ul style="list-style-type: none"> - Gas & Smoke dispersal - Environmental Contamination 	<ul style="list-style-type: none"> - Evacuation - Residential Area - Industrial Area - - Municipal Infrastructure
Truck Traffic spill Hwy 12 & 52	<ul style="list-style-type: none"> - Various Products - Fuel(s) - Fertilizers (Anhydrous) 	<ul style="list-style-type: none"> - Explosion - Gas & Smoke Dispersal - Environmental Contamination 	<ul style="list-style-type: none"> Evacuation - Property Damage

Map # 1 – North City Limits south to Loewen Blvd.

Known Possible Hazard Sites:

- Site 1 CO-OP Bulk Services
- Site 2 Terraflex
- Site 3 Esso Card Lock
- Site 4 Dawson Road Transfer
- Site 5 Big Freight Systems
- Site 6 Steinbach Airport
- Site 8 Steinbach Aquatic Centre
- Site 9
- Site 10 Pioneer Grains
- Site 11 Loewen Windows
- Site 12 Penner Transfer

Potential Resource Allocation:

- Police Services Site Security & Evacuation
- Health Services
 - ✓ Hospital Treatment of Injured
 - ✓ Ambulance Site Triage, Transportation, Specialty Evacuation
- Fire Services Fire Scene Operations
- Transportation & Operation Services
 - ✓ Senior Facilities and Bethesda Hospital
 - ✓ Utility & Operations Personnel
 - ✓ School Division
 - ✓ Handi-Bus
- Emergency Social Services
 - ✓ Accommodations
 - ✓ Registration & Inquiry
 - ✓ Secondary & Mobile R & I

The City of Steinbach Emergency Measures Plan
Book 5 – Hazard Analysis and Response Plans

Page 25 of 84

Residential Concerns:

The nearest locations for city residential populations are approximately 0.25 mile from the Airport but surround some of the sites from Loewen Boulevard east of Hwy 12 to Old Tom Road and north to Park Rd. These residential development areas include Stone Bridge Crossing, Penfeld Estates, Northview Development and Clearsprings Greens. There were 1520 residents in this area at the 2006 census but expansion in this area is very rapid and there may be as many as 1700 people living there as of 2008.

Facility Concerns:

Mennonite Heritage Village
Steinbach Aquatic Center
Clearspring Mall Shopping Center & adjacent businesses.
Industrial District west of Hwy 12 and south of Park Rd.

Maplewood Manor - See Evacuation Section of Emergency Plan for occupancy numbers. (no emergency stand-by generator)

Approximately 10% of the residents are non-ambulant. In some situations the residents may require the provision of Specialty Services and Specialty Meals.

Bethesda Place - See Evacuation Section of Emergency Plan for occupancy numbers.

Bethesda Hospital - See Evacuation Section of Emergency Plan for occupancy numbers.

These above Institutions would require a tremendous level of assistance during an evacuation due to the fact that approximately 40% of the residents are non-ambulant. In some situations the residents may require the provision of Specialty Services and Specialty Meals. **These sites are covered under the SERHA emergency plan; our mandate would be to assist as required.**

Elmdale School - See Evacuation Section of Emergency Plan for occupancy numbers. (emergency plan in place)

Steinbach Christian High School / Bible College – See Evacuation Section of Emergency Plan for occupancy numbers.

Eastman Education Centre - See Evacuation section of Emergency Plan for occupancy numbers. (emergency plan in place)

Environmental Concerns:

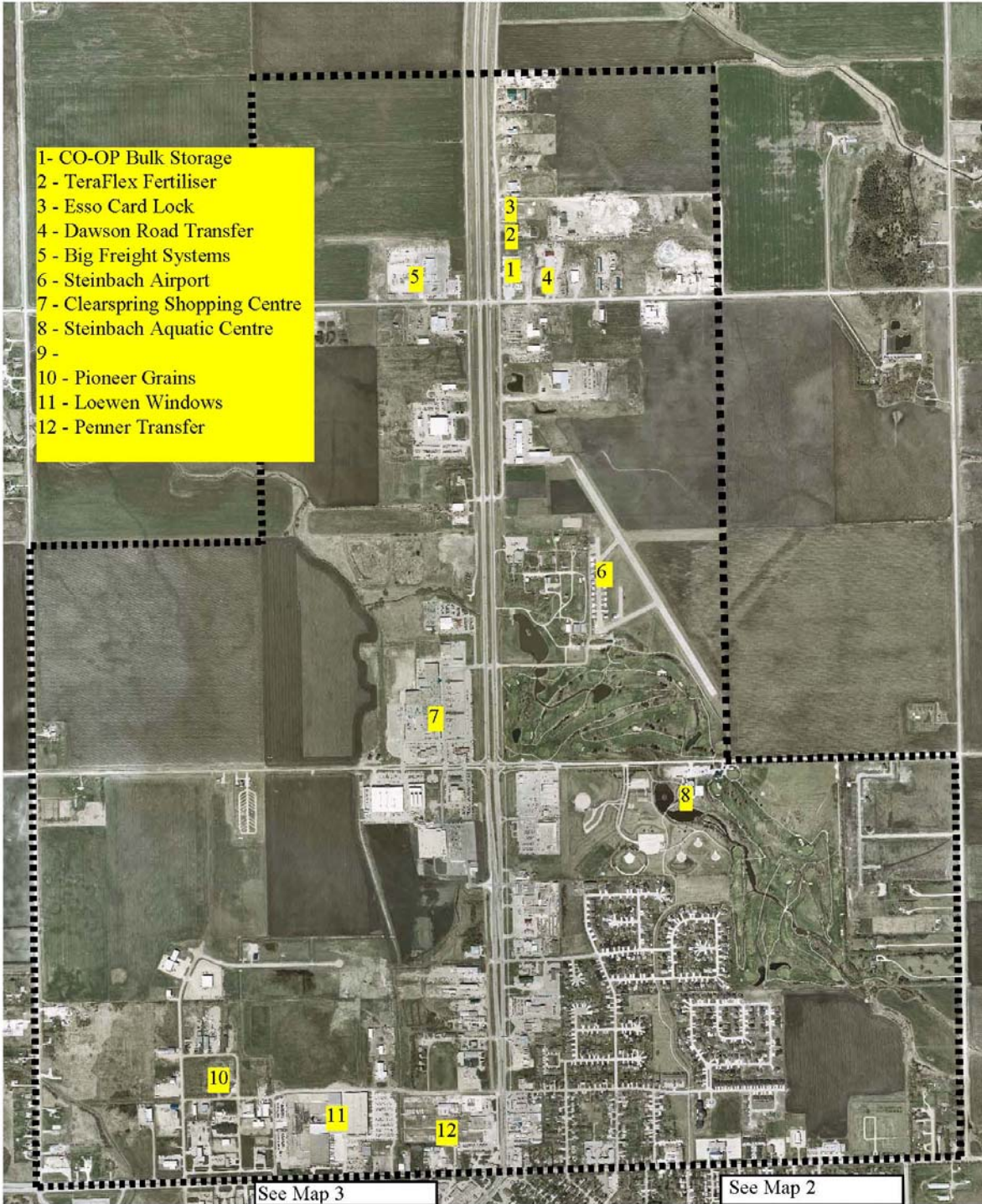
The level of environmental concern relates to two (2) primary issues:

- ∇Control of a spill to Prevent Environmental Contamination
- ∇Control of a spill to Prevent Municipal Infrastructure Contamination
- ∇Involvement of Manitoba Environment for assistance and monitoring air quality

3/19/2010

The City of Steinbach Emergency Measures Plan
Book 5 – Hazard Analysis and Response Plans

Map 1
North City Limits to
Lowewen Boluevard



Map # 2 – Hwy 12 to east City Limits, from Loewen Blvd. to south City Limits

Known Possible Hazard Sites:

- Site 2 Derksen Printers
- Site 3 City Water Plant
- Site 4 City Water Tower
- Site 5 City Water Storage Facility
- Site 6 Biovail

Potential Resource Allocation:

- Police Services Site Security, Traffic Control, Evacuation
- Health Services
 - ✓ Hospital Treatment of injured
 - ✓ Ambulance Site Triage, Transportation
- Fire Services Fire Scene Operation
- Transportation & Operation Services
 - ✓ Senior Facilities and Apartment Facilities
 - ✓ Utility & Operations Personnel
 - ✓ School Division
 - ✓ Handi-Transit
 - ✓ Fairway Ford Bus Division
- Emergency Social Services
 - ✓ Accommodations
 - ✓ Registration & Inquiry
 - ✓ Primary R & I Site

Residential Concerns:

The City of Steinbach Emergency Measures Plan
Book 5 – Hazard Analysis and Response Plans

Page 28 of 84

- Bethesda Place - See Evacuation Section of Emergency Plan for occupancy numbers.
- Bethesda Hospital - See Evacuation Section of Emergency Plan for occupancy numbers.
These above Institutions would require a tremendous level of assistance during an evacuation due to the fact that approximately 40% of the residents are non-ambulant. In some situations the residents may require the provision of Specialty Services and Specialty Meals. **These sites are covered under the SERHA emergency plan; our mandate would be to assist as required.**
- Maplewood Manor - See Evacuation Section of Emergency Plan for occupancy numbers. (no emergency stand-by generator)
- Approximately 10% of the residents are non-ambulant. In some situations the residents may require the provision of Specialty Services and Specialty Meals
- Linden Place - See Evacuation Section of Emergency Plan for occupancy numbers. (Diesel powered emergency generator)
- Fernwood Place - See Evacuation Section of Emergency Plan for occupancy numbers. (Diesel powered emergency generator)
- Parkview Apartments – See Evacuation Section of Emergency Plan for occupancy numbers. (emergency lighting only)
- Cedarwood Supportive Housing – See Evacuation Section of Emergency Plan for occupancy numbers. (emergency lighting only)
- Ashwood Apartments – See Evacuation Section of Emergency Plan for occupancy numbers. (no emergency lighting)
- Birchwood Apartments - See Evacuation Section of Emergency Plan for occupancy numbers. (no emergency lighting)

- Area east of hwy 12, to Hespler St. and south of Loewen Blvd, To Main St:
 - 2006 population figures are approximately 2900 residents. These should be relatively close for 2008.
 - Area east of hwy 12, to Hespler St. and south of Main St to south City Limits:
 - 2006 population figures show 3480 residents. Expansion in this area is very rapid and there may be as many as 3600 people living in this area as of 2008.
 - Area east of Hespler St. to City Limits and south of Loewen Blvd to South City Limits:
 - 2006 population figures show 1030 residents. Expansion in this area is quite rapid and there may be as many as 1200 people living in this area as of 2008

- Downtown Commercial Core - Unknown - time dependant

- **Facility Concerns:**
 - Elmdale School - See Evacuation Section of Emergency Plan for occupancy numbers. (emergency plan in place)
 - Woodlawn School – See Evacuation Section of Emergency Plan for occupancy numbers. (emergency plan in place)
 - Southwood School – See Evacuation Section of Emergency Plan for occupancy numbers. (emergency plan in place)

Facility Concerns cont:

3/19/2010

The City of Steinbach Emergency Measures Plan
Book 5 – Hazard Analysis and Response Plans

Page 29 of 84

- Steinbach Regional – See Evacuation Section of Emergency Plan for occupancy numbers. (emergency plan in place)
- Steinbach Junior High - See Evacuation Section of Emergency Plan for occupancy numbers. (emergency plan in place)
- Happy Feet Early Learning Centre (462 Reimer Ave) - See Evacuation section of Emergency Plan for occupancy numbers. (emergency plan in place)
- Kinder Korner Day Care Centre (307 Hanover) - See Evacuation section of Emergency Plan for occupancy numbers. (emergency plan in place)
- Sweetheart Christian Daycare (12 HickorySt.) See Evacuation section of Emergency Plan for occupancy numbers.
- Tiny Treasures Home Day Care (208 Hershfeld Rd) - See Evacuation section of Emergency Plan for occupancy numbers.
- Steinbach Christian Preschool (360 McKenzie) - See Evacuation section of Emergency Plan for occupancy numbers.

- Steinbach Curling Club - Primary concern is during the evenings and on weekends during the winter season

- T G Smith Arena complex Primary concern is during the evenings and on weekends during the winter season

- Steinbach Downtown Business District

Environmental Concerns:

The level of Environmental concern relates to two (2) primary issues:

- Control of a spill and water runoff to Prevent Environmental Contamination
- Control of a spill and water runoff to Prevent Municipal Infrastructure Contamination
- Involvement of Manitoba Environment for assistance and monitoring air quality

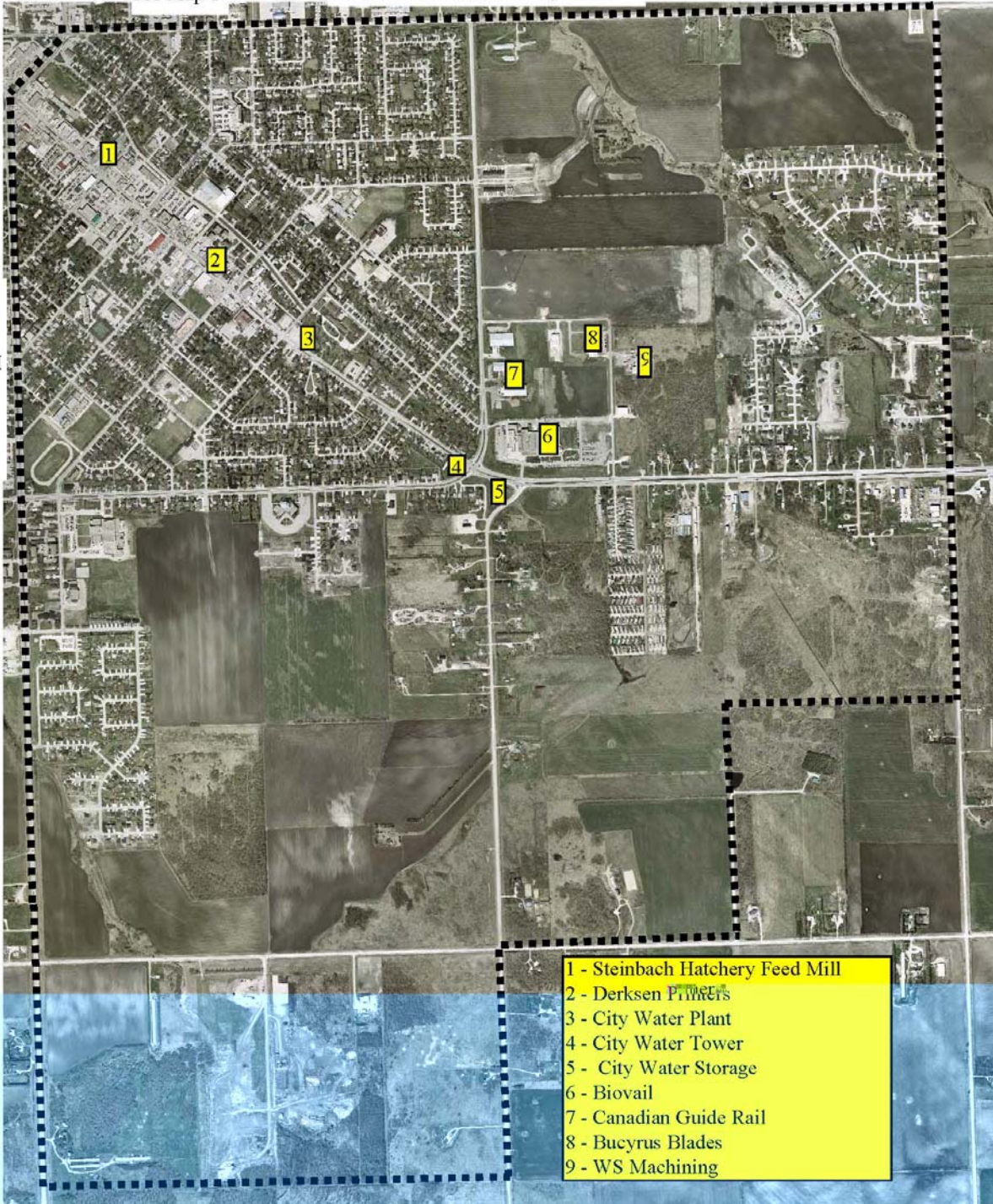
3/19/2010

The City of Steinbach Emergency Measures Plan
Book 5 – Hazard Analysis and Response Plans

Map 2
Hwy 12 to East City Limits, from
Loewen Blvd. to South City Limits

See Map 1

See
Map
3



Map # 3 – Hwy 12 to west City Limits from Loewen Blvd. to south City Limits

Known Potential Hazard Sites:

- Site 1 Mid Canada Millwork
- Site 2 Harv's Air (buildings are outside City limits but a runway extends into City limits)
-

Potential Resource Allocation:

- Police Services Site Security, Traffic Control, Evacuation
- Health Services
 - ✓Hospital Treatment of injured
 - ✓Ambulance Site Triage, Transportation
- Fire Services Fire Scene Operations
- Transportation & Operation Services
 - ✓Senior Facilities and Apartments
 - ✓School Facilities
 - ✓Single Family Residential Area
 - ✓School Division
 - ✓Fairway Ford Bus Division
 - ✓Personal Vehicles
- Emergency Social Services
 - ✓Accommodations
 - ✓Registration & Inquiry

Residential Concerns:

- Area west of Hwy 12 to west City Limits and south of Hwy 52 to south McKenzie Ave.: Population as of 2006 census was 1720 but expansion in this area has been rapid and there may be as many as 1800 people by 2008.
- Area west of hwy 12 to west City Limits and south of McKenzie to south City Limits: Population as of 2006 census was 600 people and the growth in this area is not as rapid. The figures are not expected to grow significantly for 2008.

Facility Concerns:

- Rest Haven Nursing Home – See Evacuation section of Emergency Plan for occupancy numbers.

The above Institutions would require a tremendous level of assistance during an evacuation due to the fact that approximately 40% of the residents are non-ambulant. In some situations the residents may require the provision of Specialty Services and Specialty Meals. **These sites are covered under the SERHA emergency plan; our mandate would be to assist as required.**

- Woodhaven Manor – See Evacuation section of Emergency Plan for occupancy numbers.

Environmental Concerns:

The level of Environmental concern relates to two (2) primary issues:

- Control of a spill & water run off to Prevent Environmental Contamination
- Control of a spill & water run off to Prevent Municipal Infrastructure Contamination
- Involvement of Manitoba Environment for assistance and monitoring air quality

The City of Steinbach Emergency Measures Plan
Book 5 – Hazard Analysis and Response Plans

Map 3
Hwy 12 to West City Limits from
Loewen Blvd. to South City Limits



City of Steinbach

Emergency Measures Plan

Section 3 – Hazard Analysis

EXPLOSIVES HAZARD

**The City of Steinbach
Hazard Analysis**

EXPLOSIVES HAZARD

Nature of Hazard:

An explosives hazard incident is potentially possible anywhere in the community due to the Natural Gas Service as well as the compressed gases and other materials in everyday use at the various garages and manufacturing plants spread throughout the city. The intent here is the identification of an extreme potential for a devastating explosion.

The involvement of EMO should be immediate due to the potential risk to human life well beyond the immediate incident or site.

The City of Steinbach Emergency Measures Plan
 Book 5 – Hazard Analysis and Response Plans
 Page 36 of 84

Nature of Issue:Explosion Hazard

Location	Product(s)	Life Safety Issue(s)	Service Requirements
Co-op Bulk Storage & Card lock 365 PTH North (PTH12 & Clearspring Rd.)	- (16) 80,000 liter Gas & Diesel Storage Tanks/ (1000) 200 liter barrels of oil	- Explosion - Gas & Smoke dispersal - Environmental Contamination	- Evacuation - Industrial area - Municipal Infrastructure
Biovail Manufacturing Division 100 Life Sciences Parkway Have Their own Emergency Response Plan	- Various Chemicals - Solvents - Pharmaceuticals - 50,000 L of Ethyl Alcohol in 4 above ground tanks.	- Explosion - Gas & Smoke dispersal - Environmental Contamination	Evacuation -Industrial area -Residential Area - Municipal Infrastructure

Map # 1 – North City Limits south to Loewen Blvd.

Known Possible Hazard Sites:

- Site 1 CO-OP Bulk Services
- Site 2 Terraflex
- Site 3 Esso Card Lock
- Site 4 Dawson Road Transfer
- Site 5 Big Freight Systems
- Site 6 Steinbach Airport
- Site 8 Steinbach Aquatic Centre
- Site 9
- Site 10 Pioneer Grains
- Site 12 Penner Transfer

Potential Resource Allocation:

- Police Services Site Security & Evacuation
- Health Services
 - ✓Hospital Treatment of Injured
 - ✓Ambulance Site Triage, Transportation, Specialty Evacuation
- Fire Services Fire Scene Operations
- Transportation & Operation Services
 - ✓Senior Facilities and Bethesda Hospital
 - ✓ Utility & Operations Personnel
 - ✓ School Division
 - ✓ Handi-Bus
- Emergency Social Services
 - ✓Accommodations
 - ✓Registration & Inquiry
 - ✓Secondary & Mobile R & I

Residential Concerns:

The nearest locations for city residential populations are approximately 0.25 mile from the Airport but surround some of the sites from Loewen Boulevard east of Hwy 12 to Old Tom Road and north to Park Rd. These residential development areas include Stone Bridge Crossing, Penfeld Estates, Northview Development and Clearsprings Greens. There were 1520 residents in this area at the 2006 census but expansion in this area is very rapid and there may be as many as 1700 people living there as of 2008.

The City of Steinbach Emergency Measures Plan
Book 5 – Hazard Analysis and Response Plans

Page 38 of 84

Facility Concerns:

Mennonite Heritage Village
Steinbach Aquatic Center
Clearspring Mall Shopping Center & adjacent businesses.
Industrial District west of Hwy 12 and south of Park Rd.

•Maplewood Manor - See Evacuation section of Emergency Plan for occupancy numbers.
(no emergency stand-by generator)
Approximately 10% of the residents are non-ambulant. In some situations the residents may require the provision of Specialty Services and Specialty Meals.

•Bethesda Place - See Evacuation section of Emergency Plan for occupancy numbers.

•Bethesda Hospital - See Evacuation section of Emergency Plan for occupancy numbers.

These above Institutions would require a tremendous level of assistance during an evacuation due to the fact that approximately 40% of the residents are non-ambulant. In some situations the residents may require the provision of Specialty Services and Specialty Meals. **These sites are covered under the SERHA emergency plan; our mandate would be to assist as required.**

- Elmdale School - See Evacuation section of Emergency Plan for occupancy numbers.
- Steinbach Christian High School / Bible College - See Evacuation section of Emergency Plan for occupancy numbers.
- Eastman Education Centre - See Evacuation section of Emergency Plan for occupancy numbers.

Environmental Concerns:

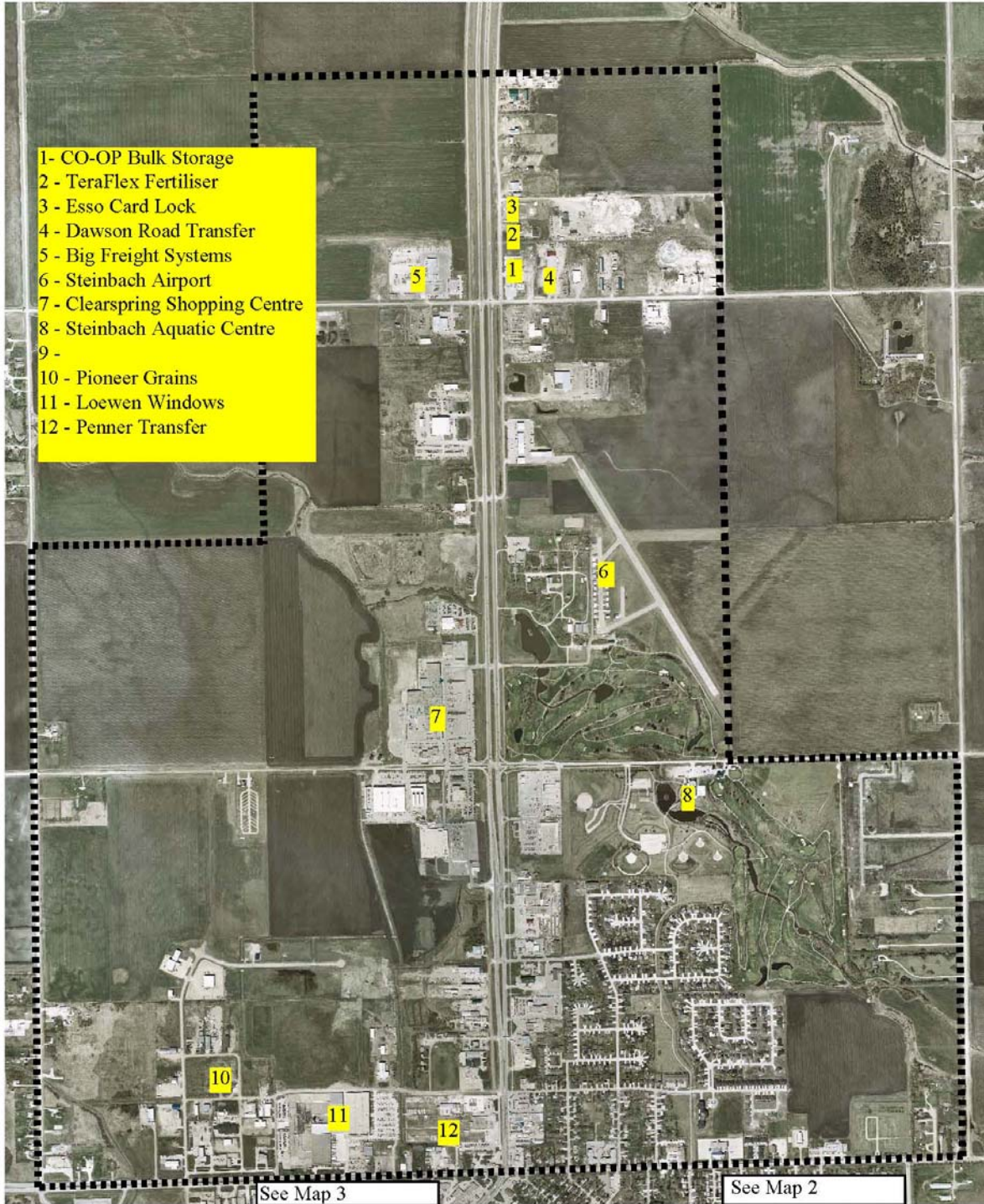
The level of environmental concern relates to two (2) primary issues:

- Control of a spill & water run off to Prevent Environmental Contamination
- Control of a spill & water run off to Prevent Municipal Infrastructure Contamination
- Involvement of Manitoba Environment for assistance and monitoring air quality

3/19/2010

The City of Steinbach Emergency Measures Plan
Book 5 – Hazard Analysis and Response Plans

Map 1
North City Limits to
Lowewen Boluevard



Map # 2 – Hwy 12 to east City Limits, from Loewen Blvd. to south City Limits

Known Possible Hazard Sites:

- Site 2 Derksen Printers
- Site 3 City Water Plant
- Site 4 City Water Tower
- Site 5 City Water Storage Facility
- Site 6 Biovail

Potential Resource Allocation:

- Police Services Site Security, Traffic Control, Evacuation
- Health Services
 - ✓ Hospital Treatment of injured
 - ✓ Ambulance Site Triage, Transportation
- Fire Services Fire Scene Operation
- Transportation & Operation Services
 - ✓ Senior Facilities and Apartment Facilities
 - ✓ Utility & Operations Personnel
 - ✓ School Division
 - ✓ Handi-Transit
 - ✓ Fairway Ford Bus Division
- Emergency Social Services
 - ✓ Accommodations
 - ✓ Registration & Inquiry
 - ✓ Primary R & I Site

Residential Concerns:

The City of Steinbach Emergency Measures Plan
Book 5 – Hazard Analysis and Response Plans

Page 41 of 84

- Bethesda Place - See Evacuation section of Emergency Plan for occupancy numbers.
- Bethesda Hospital - See Evacuation section of Emergency Plan for occupancy numbers.
These above Institutions would require a tremendous level of assistance during an evacuation due to the fact that approximately 40% of the residents are non-ambulant. In some situations the residents may require the provision of Specialty Services and Specialty Meals. **These sites are covered under the SERHA emergency plan; our mandate would be to assist as required.**
- Maplewood Manor - See Evacuation section of Emergency Plan for occupancy numbers.
(no emergency stand-by generator)
Approximately 10% of the residents are non-ambulant. In some situations the residents may require the provision of Specialty Services and Specialty Meals
- Linden Place - See Evacuation section of Emergency Plan for occupancy numbers.
(Diesel powered emergency generator)
- Fernwood Place - See Evacuation section of Emergency Plan for occupancy numbers.
(Diesel powered emergency generator)
- Parkview Apartments – See Evacuation section of Emergency Plan for occupancy numbers
(emergency lighting only)
- Cedarwood Supportive Housing – See Evacuation section of Emergency Plan for occupancy numbers
(emergency lighting only)
- Ashwood Apartments – See Evacuation section of Emergency Plan for occupancy numbers (no emergency lighting)
- Birchwood Apartments - See Evacuation section of Emergency Plan for occupancy numbers (no emergency lighting)

- Area east of hwy 12, to Hespler St. and south of Loewen Blvd, To Main St:
2006 population figures are approximately 2900 residents. These should be relatively close for 2008.
- Area east of hwy 12, to Hespler St. and south of Main St to south City Limits:
2006 population figures show 3480 residents. Expansion in this area is very rapid and there may be as many as 3600 people living in this area as of 2008.
- Area east of Hespler St. to City Limits and south of Loewen Blvd to South City Limits:
2006 population figures show 1030 residents. Expansion in this area is quite rapid and there may be as many as 1200 people living in this area as of 2008

- Downtown Commercial Core - Unknown - time dependant

Facility Concerns:

- Elmdale School - See Evacuation section of Emergency Plan for occupancy numbers (emergency plan in place)
- Woodlawn School – See Evacuation section of Emergency Plan for occupancy numbers (emergency plan in place)
- Southwood School – See Evacuation section of Emergency Plan for occupancy numbers (emergency plan in place)

Facility Concerns cont:

3/19/2010

The City of Steinbach Emergency Measures Plan
Book 5 – Hazard Analysis and Response Plans

Page 42 of 84

- Steinbach Regional – See Evacuation section of Emergency Plan for occupancy numbers (emergency plan in place)
- Steinbach Junior High - See Evacuation section of Emergency Plan for occupancy numbers (emergency plan in place)
- Happy Feet Early Learning Centre (462 Reimer Ave) - See Evacuation section of Emergency Plan for occupancy numbers. (emergency plan in place)
- Kinder Korner Day Care Centre (307 Hanover) - See Evacuation section of Emergency Plan for occupancy numbers. (emergency plan in place)
- Sweetheart Christian Daycare (12 Hickory St.) See Evacuation section of Emergency Plan for occupancy numbers.
- Tiny Treasures Home Day Care (208 Hershfeld Rd) - See Evacuation section of Emergency Plan for occupancy numbers.
- Steinbach Christian Preschool (360 McKenzie) - See Evacuation section of Emergency Plan for occupancy numbers.
- Steinbach Curling Club. Primary concern is during the evenings and on weekends during the winter season
- T G Smith Arena complex Primary concern is during the evenings and on weekends during the winter season

- Steinbach Downtown Business District

Environmental Concerns:

The level of Environmental concern relates to two (2) primary issues:

- Control of a spill and water runoff to Prevent Environmental Contamination
- Control of a spill and water runoff to Prevent Municipal Infrastructure Contamination
- Involvement of Manitoba Environment for assistance and monitoring air quality

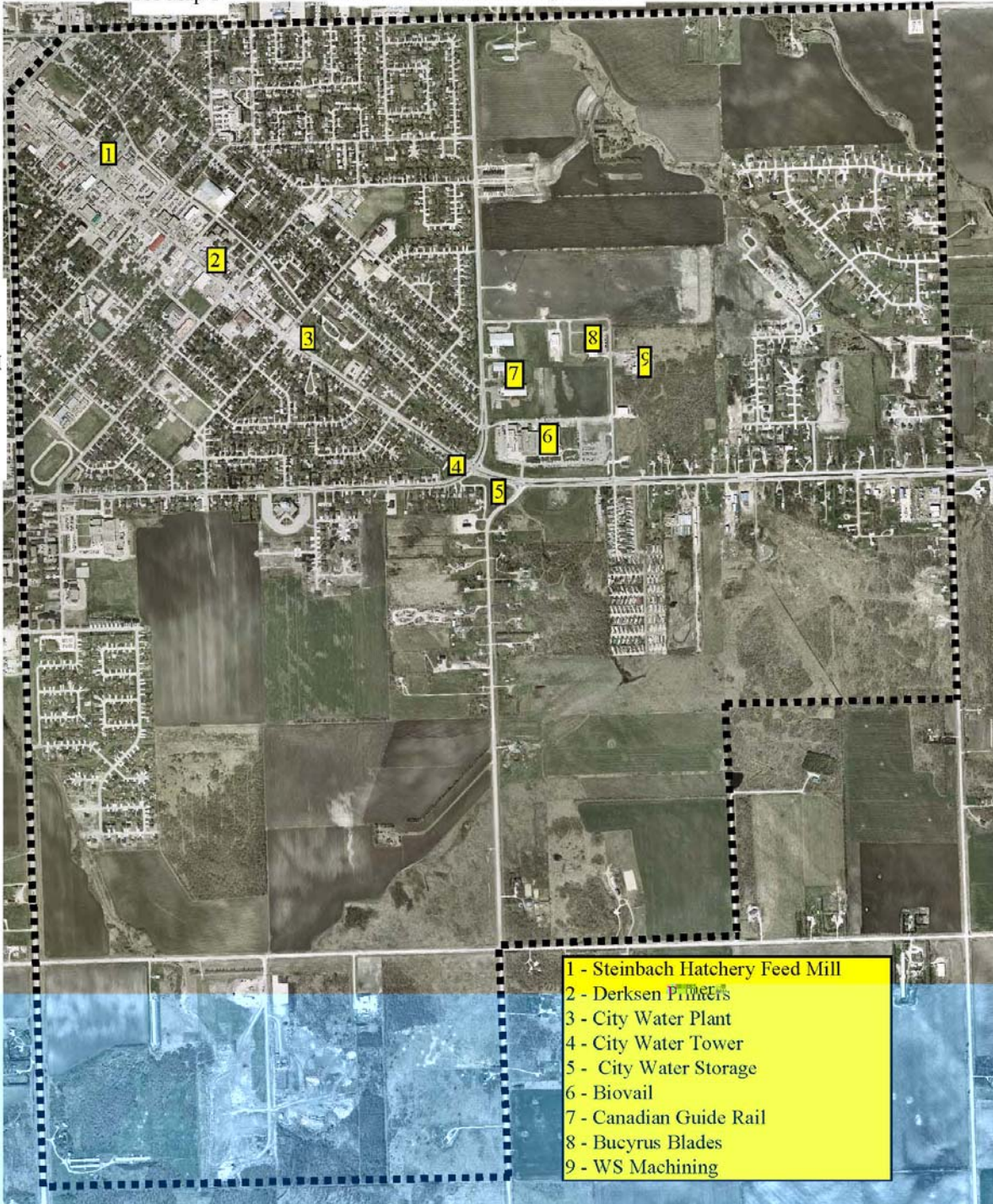
3/19/2010

The City of Steinbach Emergency Measures Plan
Book 5 – Hazard Analysis and Response Plans

Map 2
Hwy 12 to East City Limits, from
Loewen Blvd. to South City Limits

See Map 1

See
Map
3



Map # 3 – Hwy 12 to west City Limits from Loewen Blvd. to south City Limits

Known Potential Hazard Sites:

- Site 1 Mid Canada Millwork
- Site 2 Site 3Harv's Air (buildings are outside City limits but a runway extends into City limits)
-

Potential Resource Allocation:

- Police Services Site Security, Traffic Control, Evacuation
- Health Services
 - ✓Hospital Treatment of injured
 - ✓Ambulance Site Triage, Transportation
- Fire Services Fire Scene Operations
- Transportation & Operation Services
 - ✓Senior Facilities and Apartments
 - ✓School Facilities
 - ✓Single Family Residential Area
 - ✓School Division
 - ✓Fairway Ford Bus Division
 - ✓Personal Vehicles
- Emergency Social Services
 - ✓Accommodations
 - ✓Registration & Inquiry

Residential Concerns:

- Area west of Hwy 12 to west City Limits and south of Hwy 52 to south McKenzie Ave.: Population as of 2006 census was 1720 but expansion in this area has been rapid and there may be as many as 1800 people by 2008.
- Area west of hwy 12 to west City Limits and south of McKenzie to south City Limits: Population as of 2006 census was 600 people and the growth in this area is not as rapid. The figures are not expected to grow significantly for 2008.

Facility Concerns:

- Rest Haven Nursing Home See Evacuation section of Emergency Plan for occupancy numbers
The above Institutions would require a tremendous level of assistance during an evacuation due to the fact that approximately 40% of the residents are non-ambulant. In some situations the residents may require the provision of Specialty Services and Specialty Meals. **These sites are covered under the SERHA emergency plan; our mandate would be to assist as required.**
- Woodhaven Manor – See Evacuation section of Emergency Plan for occupancy numbers

The City of Steinbach Emergency Measures Plan
Book 5 – Hazard Analysis and Response Plans

Page 45 of 84

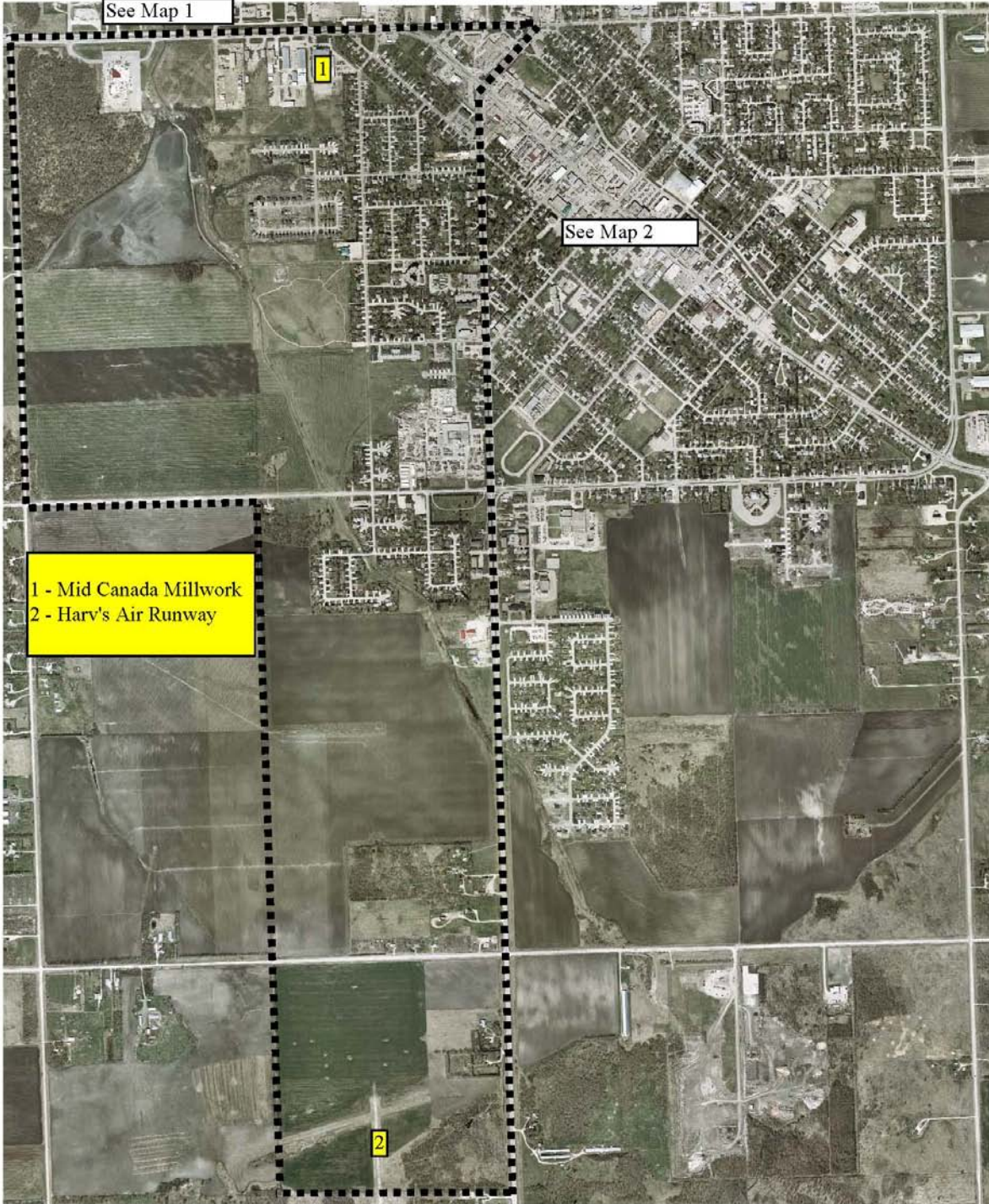
Environmental Concerns:

The level of Environmental concern relates to two (2) primary issues:

- Control of a spill & water run off to Prevent Environmental Contamination
- Control of a spill & water run off to Prevent Municipal Infrastructure Contamination
- Involvement of Manitoba Environment for assistance and monitoring air quality

The City of Steinbach Emergency Measures Plan
Book 5 – Hazard Analysis and Response Plans

Map 3
Hwy 12 to West City Limits from
Loewen Blvd. to South City Limits



City of Steinbach

Emergency Measures Plan

Section 4 – Hazard Analysis

DANGEROUS GOODS ROUTES

**The City of Steinbach
Hazard Analysis**

DANGEROUS GOODS ROUTES

Nature of Hazard:

There are no designated Dangerous Goods Routes in the City of Steinbach. The Designated Truck Routes that are to be followed by carriers of dangerous goods are: Hwy 12 North & South (Brandt Rd.), Hwy 52 East & West (Main St.) and McKenzie Ave.

Any accident, particularly involving a unit transporting a hazardous product will require the involvement of the Municipal 1st Response Units and Municipal Operations. The possible involvement of EMO may rest on the volume of product and the potential danger from infiltration into the Municipal Underground Infrastructure.

Dangerous Goods Locations

Class “B”

Service Stations

Name	Address	Products	Pin #
CO-OP Gas Bar	107 PTH. 12 N	Gasoline	UN 1203
		Diesel	UN 1202
		Propane	UN 1075
Refuel @ Superstore	130 PTH 12 N	Gasoline (100,000 L)	UN 1203
		Diesel (20,000 L)	UN 1202
Super Splash	53 PTH. 12 N	Gasoline	UN 1203
		Diesel	UN 1202
		Propane	UN 1075
Jakes Husky	Hwy 12 & Loewen	Gasoline	UN 1203
		Diesel	UN 1202
Safeway Gas Bar	143 Hwy 12 N	Gasoline	UN 1203
		Diesel	UN 1202
		Propane	UN 1075
7-Eleven	40 Brandt Rd.	Gasoline	UN 1203
CO-OP Gas Bar	Brandt & Reimer	Gasoline	UN 1203
		Diesel	UN 1202
Fas Gas	60 PTH 52 West	Gasoline	UN 1203
		Diesel	UN 1202

Business or Distributors

Name	Address	Products	Pin #
Canadian Tire	131 PTH 12 North	20 lb Propane tanks	UN 1075
Derksen Printers	377 Main St	Solvents Isopropyl Alcohol	UN1255, UN1992 UN1219
Fairway Autobody	15 Lund Rd.	Mixed paints, thinners Oxygen & acetylene	
Funks Autobody	2 Industrial Rd.	Mixed paints, thinners Oxygen & acetylene	
Loewen Body Shop	211 Main St.	Mixed paints, thinners Oxygen & acetylene	
Precision Enterprises.	110 PTH 52 West.	Oxygen & acetylene cylinders	

Manufacturers

Loewen Windows	78 PTH 52 West	Paint Products	UN 1263 & UN 3066
Mid Canada Millworks	78 PTH 52 West	Paint Products	UN 1263 & UN 3066
Biovail	100 Life Sciences Parkway	Chemicals Pharmaceuticals Ethyl Alcohol	UN1170
Canadian Guiderail	325 Hespler St. N		
Monarch Ind. Coatings	269 Hespler St.N		
ESCO	62 Life Sciences Parkway		
W S Machining	49 Life Sciences Parkway	Oxygen, Acetylene, Argone, Blueshield 6, Nitrogen, Methane , Carbon Dioxide	

Bulk Stations

The City of Steinbach Emergency Measures Plan
 Book 5 – Hazard Analysis and Response Plans

CO-OP Bulk Fuel	365 Hwy 12 N.	Diesel	UN 1202
		Gasoline	UN 1203

Bulk Plants

Pioneer Grain Chemical Warehouse	34 Pioneer Road	Mixed Chemicals	(variables)
Terraflex Chemical Warehouse	385 PTH12 North	Mixed Chemicals & Fertilizers	(variables)

Other Storage's

Fountain Tire	49 Hwy 12 N	Oxygen & acetylene cylinders, Tires	
Kal Tire	8 Hwy 52 W	Oxygen & acetylene cylinders, Tires	

The City of Steinbach Emergency Measures Plan
Book 5 – Hazard Analysis and Response Plans



City of Steinbach

Emergency Measures Plan

Section 5 – Hazard Analysis

Winter Storm Event Hazard

**The City of Steinbach
Hazard Analysis**

Winter Storm Event Hazard Plan & Policy

Nature of Hazard:

A Winter Storm Event within the City of Steinbach has the potential to come in two forms. First, is a Prairie Blizzard with snowfall and heavy winds making travel at best difficult and at worst making roadways impassable. Although of significance to facilities needing 24-7 staffing there is little or no loss in terms of Provincial or Municipal Infrastructure Services and the overall impact on the Community-at-Large is minimal.

EMO would become directly involved in the second potential event being a Major Winter Storm accompanied by heavy snow or ice, significant winds plus the loss of Provincial and/or Municipal Infrastructure Services. The impact of such an event could be significant because most institutional/residential facilities plus most family homes are unprepared to function without Public Utility Services.

The City of Steinbach Emergency Measures Plan
 Book 5 – Hazard Analysis and Response Plans
 Page 55 of 84

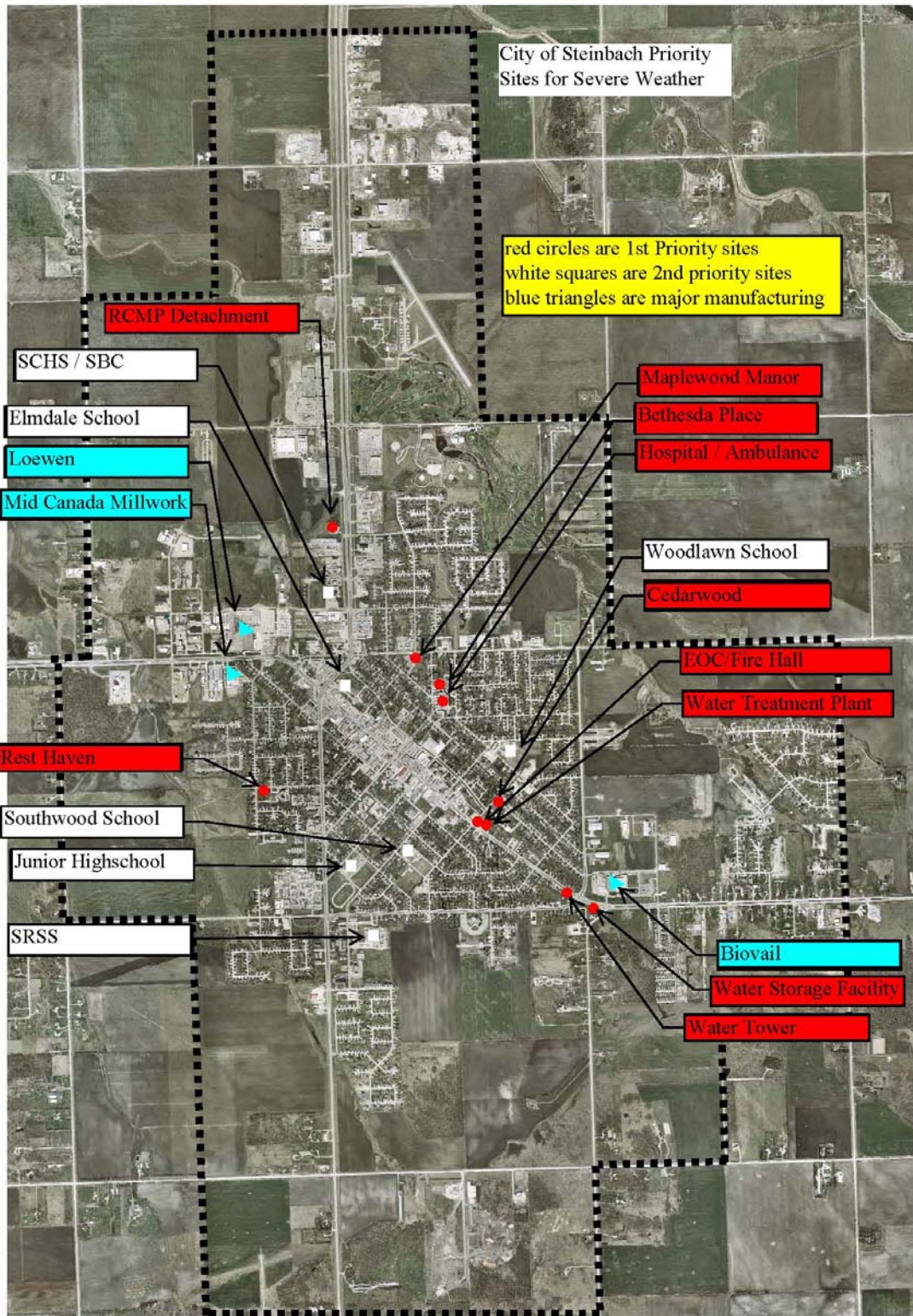
Type of Issue: Winter Storm Event - Snow

Location	Critical Issues	Life Safety Issue(s)	Service Requirements
Steinbach Fire Department Steinbach RCMP Detachment Bethesda Hospital Steinbach EOC (located in Fire Hall)	Provision of Fire Services Provision of Police Services Provision of Ambulance Services Provision of Hospital Care Emergency Ops. Centre	All – Staffing Access	- Staff access to & from location - Emergency Vehicle Movement - Maintenance of Heat, Light, etc. - Communications
Public Works Yard Water Treatment Plant Waste Water Treatment Plant	- Access	All – Staffing Access	- Staff Access - Maintenance of heat, Light, etc. - Communications
Bethesda Place Maplewood Manor Rest Haven nursing Home Cedarwood Supportive Housing	- Access - Municipal Utility Services - Public Utility Services	All – Staffing Access	- Staff Access - Maintenance of heat, Light, etc. - Communications

The City of Steinbach Emergency Measures Plan
 Book 5 – Hazard Analysis and Response Plans
 Page 56 of 84

Type of Issue: Winter Storm Event - Freezing Rain/Snow

Location	Critical Issues	Life Safety Issue(s)	Service Requirements
Steinbach Fire Department Steinbach RCMP Detachment Bethesda Hospital Steinbach EOC Centre @ Fire Hall	Provision of Fire Services Provision of Police Services Provision of Ambulance Services Provision of Hospital Care Emergency Ops. Centre	All – Staffing Access Utility Services	- Staff access to & from location - Emergency Vehicle Movement - Maintenance of Heat, Light, etc. - Communications
Public Works Yard Water Treatment Plant Waste Water Treatment Plant	- Access	All – Staffing Access Utility Services	- Staff Access - Maintenance of heat, Light, etc. - Communications
Bethesda Place Maplewood Manor Rest Haven nursing Home Cedarwood Supportive Housing	- Access - Municipal Utility Services - Public Utility Services - Life Safety	All – Staffing Access Utility Services	- Staff Access - Maintenance of heat, Light, etc. - Communications
Regional Secondary School Elmdale School Southwood School Woodlawn School Steinbach Bible College Steinbach Christian High School Red River College Steinbach Junior High School	- Access - Municipal Utility Services - Use as Community Evacuation Centre - feeding - availability	- Public Health requirements - regular medical visits - facility maintenance - availability of Utility Services	-SRSS equipped with Back up Gen. - Maintenance of heat, light, etc. - Communications (Internal & External)



Institutional Facilities

Emergency Power Back-up Systems

Rest Haven Nursing Home

Equipped with natural gas back power generator and should be self-sufficient as long as the supply of natural gas continues.

Bethesda Place

Bethesda Place has a diesel generator with 200 gallons of fuel. This will run for approximately 8 hours on the existing fuel. The generator powers all services in the building including elevators and sump pumps as well as portions of the Bethesda Hospital. This facility can remain relatively self-sufficient with the provision of fuel being the major issue during an extended power outage situation.

Bethesda Hospital

Bethesda Hospital has a large generator with a 200-gallon tank. This generator will run for approximately 8 hours on the fuel available in the system. The generator runs all systems within the Hospital, and therefore, the central issue will be to ensure the continual availability of fuel.

Maplewood Manor

Has a battery Back-up System for emergency lights and alarm systems. This power source will last for approximately 1 to 2 hours. Should this facility experience an extended power outage, there is a potential for a dramatic impact on Steinbach's Emergency Services.

Cedarwood Supportive Housing

Has emergency power for emergency lights and alarm systems. There are 29 residents in this facility under the care of the Haven Group and should this facility experience an extended power outage, there is a potential for a dramatic impact on Steinbach's Emergency Services.

WINTER STORM EVENTS

3/19/2010

The City of Steinbach Emergency Measures Plan
Book 5 – Hazard Analysis and Response Plans

Page 59 of 84

Although the potential does exist for a “**Weather Advisory or Warning**” regarding a Winter Storm Event, the severity of the event is an unknown until the event actually hits the Community. Therefore, some potential does exist for advanced planning but the reality is that Winter Storm Events will not provide for an extended planning period.

1. The City of Steinbach can experience Winter Storm Events in two significant forms:

- (a) A major Winter Snow Blizzard is a regular occurrence expected at least once during the period from November 1 to April 15. The primary issues are the varying degree of snowfall, wind and the period of time travel is restrictive within the Community. Over a significant period of time such storms can prove detrimental to the operation of Institutional Facilities and Emergency Services. Generally the citizens of the City are aware of the potential for such storms and although citizens in a non-institutional setting do experience some difficulty, they can normally struggle through these difficulties between the start of the event and when the roads are once again open for public travel.
 - (b) A major Winter Storm (Ice or Snow) Event knocking out municipal and public utility services, particularly electrical and communication services, could be of far greater significance to the citizens of the City. The loss of electrical and communication services could prove detrimental to the total population and extremely hazardous to the Community’s Institutional Population. In addition, if the timing of such an event was during the normal school day the impact would be significantly more dramatic due to:
 - (i) The large population of out-of-City students at the Regional Secondary School; and
 - (ii) The large number of individuals, within the City and Region, who are employed outside of their Community; and
 - (iii) The large number of people from outside the City but employed in the City, and
 - (iv) The Regional nature of services, particularly Emergency Services, provided from the City of Steinbach.
2. The length of both these events can be as short couple of hours and/or as long as 3 days. Generally the significance of the event becomes more serious as the events extend to or beyond 24 hours. Normally the greatest potential for public concern is the provision of Immediate Emergency Services and Institutional Care.
3. During the past six (6) years the City of Steinbach has averaged a minimum of one (1) major Winter Snow Blizzard Event each year. In the major of instances, other than restricting travel possibilities within and outside the Community, these events have had little significant impact on the provision of Community Services. The City of Steinbach has not experienced a major Winter Ice and Snow Event over the past six years.

3/19/2010

4. During the past (15) years only one major Snow Event has had a significant impact on the Institutional Facilities and Immediate Emergency Services within the City of Steinbach. The primary institutional impact has been the inability for Relief Personnel to get to the institutions. Over an extended period of time, this raises tremendous concern about potential impacts on client care as staff becomes exhausted due to extended work hours. The Emergency Services' primary concern has been the inability for Emergency Services Vehicles to travel within and/or beyond the Community due an accumulation of snow on streets and highways.
5. Although the potential loss of Public Utility Services (Hydro, Telephone, Water and Sewer) is of concern, these services have not been lost during any of the past Winter Storm Events. Clearly the loss of Municipal and Public Utility Services would dramatically change the impact of a Winter Storm Event and place a major burden on the Community's Emergency Measures System.

A.Possible Major Effects (Worse Case)

- 1.Loss of Public and Municipal Infrastructure.
- 2.Total loss of Community and Emergency Service Communications Systems
- 3.Disruption of Emergency Services and Community Transportation Systems
- 4.Evacuation within the Community
- 5.Evacuation of Institutional Facilities
- 6.Evacuation of the total community to a location beyond of the Municipal Boundaries.
- 7.Private and Public Property Security and Damage

B.Areas of Concern

- 1.Steinbach Emergency Services
 - Steinbach Fire Hall
 - Steinbach RCMP Detachment
 - Bethesda Hospital/Ambulance
 - Steinbach EOC Center (located at Fire Hall)
- 2.Municipal Utility Services
 - Steinbach Water Treatment Plant
 - Steinbach Pollution Control Centre
 - Public Works Building
- 3.Steinbach Personal Health Care Facilities
 - Bethesda Place
 - Maplewood Manor
 - Rest Haven Nursing Home
 - Cedarwood Supportive Housing

4. Senior Housing Complex
 - Ashwood
 - Birchwood
 - Parkview
 - Linden Place
 - Fernwood Place
 - 175 Woodhaven

C.Potential Actions During an EventAgency Responsible

1.Provision of access to InstitutionalOperations Department Facilities and Sites for personnel and Immediate Emergency Services Response Personnel.

2.The provision of support to Steinbach’s ImmediateOperations Department Emergency Services System

3.The implementation of an EmergencyEmergency Operations Centre Communications System for Immediate Emergency Services, Institutional and Reception Centre Communications

4.The maintenance of Institutional, Emergency Emergency Operations Centre Services and Reception Centre Utility Systems Assist the SERHA Emergency Response Plan

5.The provision of electrical support services, on an Emergency Operations priority basis, to sustain citizen services

6.The provision of Reception Centre Services asEmergency Social Services necessary and available due to the potential lossEmergency Transportation or utility services.

NOTE:The SRSS has Back Up Power capabilities

7.The provision of information within the CommunityEmergency Social Services and to individuals living outside of the Community. Emergency Public Information when normal communications system are disrupted.

8.Assistance to Utility Crews to maintain or repair theEmergency Operations Public Utility Network

9.Property Protection and Security - Assist RCMP as necessary

EquipmentSource

3/19/2010

The City of Steinbach Emergency Measures Plan
Book 5 – Hazard Analysis and Response Plans

Page 62 of 84

- Province of Manitoba Dept. of Highways
- Operations, Contractor Trucks & Equipment Operations, Contractors
- Emergency Generators -EOC Resources List
- Blankets - EOC/Private Homes
- Cots -EOC
- Temporary Heating Systems -Private Homes
- Portable non-utility support Feeding Systems - EOC
- Transportation - EOC Transportation List
- Reception Centres - EOC Reception list
- Evacuation Support - Emergency Social Services
- Equipment/Expertise- Manitoba Hydro

Note: It is extremely possible that a significant Winter Blizzard or Ice & Snow Event could disrupt the whole or a significant portion of Southeastern Manitoba. Therefore, the potential for significant support services from the Province may be severely limited. It is also possible that the City of Steinbach may become a Regional Reception Centre for individuals from outside the Community.

It is possible that Reception centers may have to be set up at Serving Seniors, Legion Hall, Steinbach Arena, SRSS, etc.

Temporary back up power will have to be provided at sites except the SRSS, which is equipped with a natural gas backup generator.

D. Winter Blizzard/Ice Snow Event Issues

The following are the critical issues related to the delivery of Worse Case Scenario Winter Blizzard/Ice & Snow Event priorities, which Council may be required to decide upon:

1. What additional role might be expected of Steinbach's Immediate Emergency Response Units particularly with respect to the provision of assistance to Institutional Care Facilities?
2. What level of day-to-day services will the City maintain during such an Emergency Event particularly if the event was to extend over a significant period of time?
3. Under what conditions will the City provide operational assistance, if requested, to surrounding municipalities?
4. What level of financial commitment is the City prepared to approve to assist Private Industry, Quasi-private Organizations and Private Home Owners?

E. Winter Storm Management Priorities

1. Emergency Services Units Management Priorities

The Operational Priorities established for Steinbach's Emergency Response Units (Police, Fire and Ambulance) during a Major Winter Storm or Ice & Snow Event are:

- 1st** Extraction of citizens from life threatening situations
- 2nd** Maintenance of Departmental day-to-day operational responsibilities for the provision of Fire, Police and Ambulance Services
- 3rd** Evacuation Assistance and Coordination
- 4th** Security of Public and Private Facilities

The critical responsibility of all Emergency Services Personnel is to ensure citizens are comfortable that they will, in a life-threatening situation, have available to them no less than the normal level of Emergency Service. In addition, should individuals be required to leave their homes, they must be assured that their possession will be protected over a period of time that could extend well beyond one (1) day.

2. Municipal Departmental Management Priorities

The operational priorities established for Steinbach's Departments are:

1st Protection and maintenance of the Emergency Services Communications Network assuming the loss of the Manitoba Hydro and MTS Communications Grids.

- Emergency Radio Network out of EOC
- Public Access (Direct or 911)
- Emergency Electrical Support in priority order to:
 - a) Steinbach EOC and EOC Radio Network
 - b) Steinbach Fire Department
 - c) Steinbach RCMP Detachment
 - d) Bethesda Hospital

Note: This represents, initially, the provision of minimal services in order to ensure that Steinbach's Immediate 1st Response Units can maintain their ability to address their first objective; removal of individuals from life threatening situations. Once this initial work is completed, there will be the need to expand these services to permit the EOC to begin to address the long-term issues that will arise within the Community.

2nd The provision of operational support to Institutions providing Life Assistance Services within the City of Steinbach. Of particular concern are the Community Health Care Facilities where moving clients would create a great deal of difficulty for the clients and the personnel.

Note: Initially this represents the provision of minimal services in order to ensure that the institutions can maintain a minimal level of immediate support services to their clients. These services will have to be expanded as quickly as possible, to ensure Institutional Clients and Facilities do not become a continual drain on the Community Emergency Response System and on the Communities need for additional resources.

3rd The provision of assistance, help or security, to individuals in a Home Care or Life Monitoring System.

Note: The Critical issue here is knowing locations, primary care provider, and as needed moving the individual to a better location.

4th Sustaining the provision of Municipal Utility Services to the total Community.

The City of Steinbach Emergency Measures Plan
Book 5 – Hazard Analysis and Response Plans

Page 65 of 84

5th The provision and establishment of Community Reception Centres in order to ensure that if required such Centres can become operational during the Emergency and made available, immediately, to the EOC and the Public.

Note: This represents, initially, the provision of minimal services in order to ensure that Emergency Social Assistance Workers can establish the Reception Centre and begin to receive and provide support to members of the Public. As the timing of the event expands there will be an ever-expanding demand to provide additional resources and effort into the provision of total Reception Centre Services.

6th The development of a Community Information Network under the assumption that all normal communications systems will be disrupted by the loss of Manitoba Hydro and MTS Services.

7th The planning for the evacuation of parts and/or all of the Community, as necessary in order to sustain Basic Life Support Services to citizens in a non-institutional setting.

Note: The level of evacuation will be totally dependent on the ability of the EOC to obtain or provide Utility Services to Institutions and Community Reception Centres. Without Utility Services there may be a need to undertake a total Community Evacuation.

8th The provision of property security within part and/or all of the Community depending on the need for undertaking an evacuation.

9th The development and implementation of a Community re-entry program including:

- Determination of an acceptable level of Utility Service
- Provision of all Utility Services
- Critical Stress Debriefing for Emergency Personnel, Institutional Personnel and Citizens

3. Financial Commitment for Materials

The cost of addressing a major Winter Snow Event is covered within the annual Snow Clearing and Removal Budget of the Corporation.

The mechanisms for providing assistance during a significant Snow & Ice Event within an Emergency Measures Event are:

1. Private Property Costs, in situations where evacuation is not directed by Emergency Measures Personnel under a “State of Local Emergency”, are the responsibility of the Property Owner and addressed through their insurance provider. This includes any damages to Private Property.
2. Private Property Costs, in situations where evacuation is directed by Emergency Measures Personnel under a “State of Local Emergency” are the responsibility of the Property Owner and addressed through their insurance provider. This includes any damages to Private Property. In a case of proven negligence on the part of Emergency Measures Personnel the issue will be addressed through the Insurer of the City of Steinbach.
3. In situations where an insurance provider does not cover costs, the rules of the Province of Manitoba Disaster Assistance Fund shall apply and the City of Steinbach shall establish the personnel and the process for the making of Disaster Assistance Claims by the Citizens of the city.
4. In situations where a “State of Local Emergency” has been declared and individuals are directed to leave their place of residence essential basic requirements - food, shelter and clothing - shall be provided by the City of Steinbach under the regulations of the Manitoba Disaster Assistance Fund only under the following conditions:
 - a) The individual(s) has registered at a Steinbach Registration and Inquiry Centre prior to leaving the Community; and
 - b) The individual(s) can provide a receipt for all items claimed as part of their costs of evacuation.

OR

- a) The individual(s) remain in a Reception Centre setting provided by the City of Steinbach Emergency Measures System; and
- b) All items claimed are approved through a Voucher or Purchase Requisition signed by a member of the Emergency Measures Team with the appropriate spending authority.

The City of Steinbach Emergency Measures Plan
Book 5 – Hazard Analysis and Response Plans

Page 67 of 84

5. Institutional Administrators, whether Institutional Care Providers or responsible for facilities used as Reception Centres, may make application to cover their costs to the City of Steinbach. After confirmation of how these costs will be addressed by the Provincial Departments, the City will reimburse all cost that are covered through the Manitoba Disaster Assistance Program. All costs must be substantiated as required by the Manitoba Disaster Assistance Program.
6. All private enterprise or Community Association costs shall be paid as per the Purchase Requisition or Voucher approved by a spending authority of the City of Steinbach Emergency Measures Organizations.
7. Reimbursement to the City of Steinbach for the provision of evacuation assistance to individuals from another Municipal Corporation shall be at the 100% level as per the guidelines of the Province of Manitoba Disaster Assistance Program.

City of Steinbach

Emergency Measures Plan

Section 6 – Hazard Analysis

Severe Summer Storm/Tornado

**The City of Steinbach
Hazard Analysis**

**Severe Summer Storm / Tornado Event
Hazard
Plan & Policy**

Nature of Hazard:

A Severe Thunder Storm / Tornado Event within the City of Steinbach has the potential to cause loss of life, personal injury, death and injury to pets, property damage and destruction of businesses. The major problem in being prepared for severe storms is they can develop quickly and hit hard.

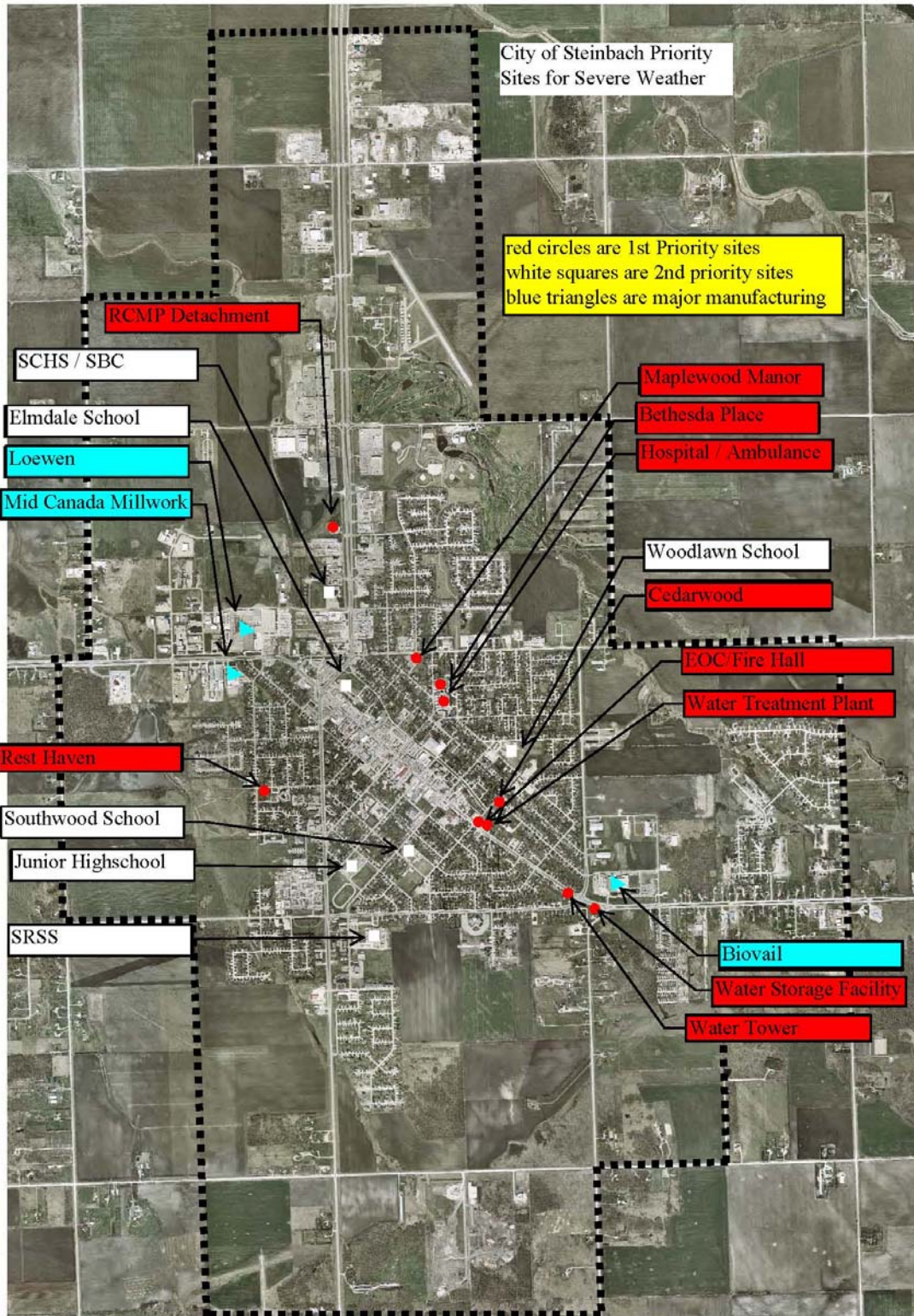
Weather Watches and Weather Warnings issued by Environment Canada and broadcast over local, regional, and national radio and televisions are currently the only warning method available. **Weather Watch: Conditions are favorable for a severe storm, even though one has not yet developed. Keep monitoring weather conditions and listen for updated statements. Weather Warning: Severe weather is happening or hazardous weather is highly probable. Tornado Warning: means that one or more tornadoes have been observed or are forecast for the specified area. Other warnings types include severe thunderstorm, high winds, and heavy rain.**

EMO would become directly involved should flash flooding due to heavy rains, widespread hail damage, tornado or significant winds causing loss of life or personal injury that overwhelms the Municipal Response Teams plus the loss of Provincial and/or Municipal Infrastructure Services. The impact of such an event could be significant because most institutional/residential facilities plus most family homes are unprepared to function without Public Utility Service

The City of Steinbach Emergency Measures Plan
 Book 5 – Hazard Analysis and Response Plans
 Page 70 of 84

Type of Issue: Severe Summer Storm / Tornado Event

Location	Critical Issues	Life Safety Issue(s)	Service Requirements
Steinbach Fire Department Steinbach RCMP Detachment Bethesda Hospital Steinbach EOC Centre @ Fire Hall	Provision of Fire Services Provision of Police Services Provision of Ambulance Services Provision of Hospital Care Emergency Ops. Centre	All – Staffing Access Utility Services	- Staff access to & from location - Emergency Vehicle Movement - Maintenance of Heat, Light, etc. - Communications
Public Works Yard Water Treatment Plant Waste Water Treatment Plant	- Access	All – Staffing Access Utility Services	- Staff Access - Maintenance of heat, light, etc. - Communications
Bethesda Place Maplewood Manor Rest Haven nursing Home Cedarwood Supportive Housing	- Access - Municipal Utility Services - Public Utility Services - Life Safety	All – Staffing Access Utility Services	- Staff Access - Maintenance of heat, Light, etc. - Communications
Regional Secondary School Elmdale School Southwood School Woodlawn School Steinbach Bible College Steinbach Christian High School Red River College Steinbach Junior High School	- Access - Municipal Utility Services - Use as Community Evacuation Center - Feeding - Availability	- Public Health requirements - medical access - facility maintenance - availability of Utility Services	- SRSS equipped with Back up Gen. - Maintenance of heat, light, etc. - Communications (Internal & External)
Major Manufacturing Industry Loewen Windows (77 PTH52W) Biovail (100 Life Sciences Parkway) Mid Canada Millwork (78 PTH52W)	Access Search & Rescue Evacuation Triage	All – # of staff in building. Up to 800 at shift change (Working on Emergency Plan) Up to 450 at shift change (Emergency Plan in Place) Up to 150 people (Fire Evacuation Plan)	Staff evacuation from building Emergency vehicle movement Triage Area Reception/Evacuation Center



Institutional Facilities

Emergency Power Back-up Systems

Rest Haven Nursing Home

Equipped with natural gas back power generator and should be self-sufficient as long as the supply of natural gas continues.

Bethesda Place

Bethesda Place has a diesel generator with 200 gallons of fuel. This will run for approximately 8 hours on the existing fuel. The generator powers all services in the building including elevators and sump pumps as well as portions of the Bethesda Hospital. This facility can remain relatively self-sufficient with the provision of fuel being the major issue during an extended power outage situation.

Bethesda Hospital

Bethesda Hospital has a large generator with a 200-gallon tank. This generator will run for approximately 8 hours on the fuel available in the system. The generator runs all systems within the Hospital, and therefore, the central issue will be to ensure the continual availability of fuel.

Maplewood Manor

Has a battery Back-up System for emergency lights and alarm systems. This power source will last for approximately 1 to 2 hours. Should this facility experience an extended power outage, there is a potential for a dramatic impact on Steinbach's Emergency Services.

Cedarwood Supportive Housing

Has emergency power for emergency lights and alarm systems. There are 29 residents in this facility under the care of the Haven Group and should this facility experience an extended power outage, there is a potential for a dramatic impact on Steinbach's Emergency Services.

SEVERE SUMMER STORM EVENTS

Although the potential does exist for a “**Weather Advisory or Warning**” regarding a Severe Thunder Storm, Heavy Rain, High Wind or Tornado Event, the severity of the event is an unknown until the event actually hits the Community. Therefore, some potential does exist for advanced planning but the reality is that these Severe Storm Events will not provide for an extended planning period.

1. The City of Steinbach can experience Severe Storm Events in two significant forms:

- (a) A Severe Thunder Storm is a regular occurrence expected at least once during the period from May 1 to September 15. The primary issues are the varying degree of rain, wind and the possibility of hail, wind or lightning damage within the Community. Over a significant period of time such storms can prove detrimental to the operation of Institutional Facilities and Emergency Services. Generally the citizens of the City are aware of the potential for such storms and although citizens in a non-institutional setting do experience some difficulty, they can normally struggle through these difficulties between the start of the event and when services are restored.
- (b) A major Summer Storm / Tornado Event knocking out municipal and public utility services, particularly electrical and communication services, could be of far greater significance to the citizens of the City. The loss of electrical and communication services could prove detrimental to the total population and extremely hazardous to the Community’s Institutional Population. In addition, if the timing of such an event was during the normal school / work day the impact would be significantly more dramatic due to:
 - (v) The large population of out-of-City students at the Regional Secondary School; and
 - (vi) The large number of individuals from within the City who are employed outside of their Community; and
 - (vii) The large number of people from outside the City but employed in the City, and
 - (viii) The Regional nature of services, particularly Emergency Services, provided from the City of Steinbach.

2. The length of both these events can be extremely short or could last a few hours. Generally the significance of the event becomes more serious as the cleanup and restoration of utilities extends to or beyond 24 hours. Normally the greatest potential for public concern is the provision of Immediate Emergency Services and Institutional Care.

3. During the past ten (10) years the City of Steinbach has averaged a minimum of one (1) major Summer Thunderstorm Event each year. In the major of instances, other than restricting travel possibilities within and outside the Community due to downed trees and hydro wires, these events have had little significant impact on the provision of Community Services. The City of Steinbach has not experienced a Tornado Event over the past ten (10) years, but has had at least one (1) incident of heavy rains causing flash flooding and one (1) incident of damaging winds causing damage to buildings, trees and power outages lasting as long as fourteen (14) hours in parts of the City.

4. Although the potential loss of Public Utility Services (Hydro, Telephone, Water and Sewer) is of concern, these services have not been completely lost during any of the past Severe Storm Events. Partial loss of Hydro facilities to portions of the City has occurred. Clearly the loss of Municipal and Public Utility Services would dramatically change the impact of a Severe Summer Storm Event and place a major burden on the Community's Emergency Measures System.

A.Possible Major Effects (Worse Case)

1. Loss of Public and Municipal Infrastructure.
2. Total loss of Community and Emergency Service Communications Systems
3. Disruption of Emergency Services and Community Transportation Systems
4. Evacuation within the Community
5. Search, Rescue & Evacuation of major Manufacturing facilities
6. Evacuation of Institutional Facilities
7. Evacuation of the total community to a location beyond of the Municipal Boundaries.
8. Private and Public Property Security and Damage

B.Areas of Concern

- 1.Steinbach Emergency Services
 - Steinbach Fire Hall
 - Steinbach RCMP Detachment
 - Bethesda Hospital/Ambulance
 - Steinbach EOC Center (located at Fire Hall)
- 2.Municipal Utility Services
 - Steinbach Water Treatment Plant
 - Steinbach Pollution Control Centre
 - Public Works Building
- 3.Steinbach Personal Health Care Facilities
 - Bethesda Place
 - Maplewood Manor
 - Rest Haven Nursing Home
 - Cedarwood Supportive Housing
- 4.Senior Housing Complex
 - Ashwood
 - Birchwood
 - Parkview
 - Linden Place
 - Fernwood Place
 - 175 Woodhaven
5. Major Manufacturing
 - Loewen Windows
 - Biovail
 - Mid Canada Millwork

C. Potential Actions During an Event

1. Provision of access to Institutional Operations Department Facilities and Sites for personnel and Immediate Emergency Services Response Personnel
2. The provision of support to Steinbach's Immediate Operations Department Emergency Services System.
3. The implementation of an Emergency Operations Center Communications System for Immediate Emergency Services, Institutional and Reception Center Communications
4. The maintenance of Institutional, Emergency Operations Center Services and Reception Center Utility Systems.
5. Assist the SERHA Emergency Response Plan
6. The provision of electrical support services, on an Emergency Operations priority basis, to sustain citizen services.
7. The provision of Reception Center Services as Emergency Social Services become necessary and available due to the potential loss of utility services.
NOTE: The SRSS has Back Up Power capabilities
8. The provision of information within the Community Emergency Social Services and to individuals living outside of the Community. Provide Emergency Public Information when normal communications system is disrupted.
9. Assistance to Utility Crews to maintain or repair the Emergency Operations Public Utility Network
10. Property Protection and Security in conjunction with RCMP
11. Follow the Emergency Actions Guidelines for Mayor/Council & EOC Team for Severe Weather

1. Province of Manitoba Dept. of Highways
2. Operations, Contractor Trucks & Equipment Operations, Contractors
3. Emergency Generators - EOC Resources List
4. Blankets - EOC/Private Homes
5. Cots - EOC
6. Temporary Heating Systems - Private Homes
7. Portable non-utility support Feeding Systems - EOC
8. Transportation - EOC Transportation List
9. Reception Centers - EOC Reception list
10. Evacuation Support - Emergency Social Services
11. Equipment/Expertise Manitoba Hydro

Note: It is extremely possible that significant Severe Summer Storms or Tornadoes could affect a significant portion of Southeastern Manitoba. Therefore, the potential for significant support services from the Province may be severely limited. It is also very possible that the City of Steinbach may become a Regional Reception Center for individuals from outside the Community.

It is possible that Reception centers may have to be set up at Serving Seniors, Legion Hall, Steinbach Arena, SRSS, etc.

Temporary back up power will have to be provided at sites except the SRSS, which is equipped with a natural gas backup generator.

D. Severe Summer Storm / Tornado Event Issues

The following are the critical issues related to the delivery of Worse Case Scenario Severe Storm / Tornado Event priorities, which Council may be required to decide upon:

1. What additional role might be expected of Steinbach's Immediate Emergency Response Units particularly with respect to the provision of assistance to Institutional Care Facilities?
2. What level of day-to-day services will the City maintain during such an Emergency Event particularly if the event was to extend over a significant period of time?
3. Under what conditions will the City provide operational assistance, if requested, to surrounding municipalities?
4. What level of financial commitment is the City prepared to approve to assist Private Industry, Quasi-private Organizations and Private Home Owners?

E. Severe Summer Storm Management Priorities

1. Emergency Services Units Management Priorities

The City of Steinbach Emergency Measures Plan
Book 5 – Hazard Analysis and Response Plans

Page 77 of 84

The Operational Priorities established for Steinbach's Emergency Response Units (Police, Fire and Ambulance) during a Severe Summer Storm / Tornado Event are:

- 1st** Extraction of citizens from life threatening situations
- 2nd** Maintenance of Departmental day-to-day operational responsibilities for the provision of Fire, Police and Ambulance Services
- 3rd** Evacuation Assistance and Coordination
- 4th** Security of Public and Private Facilities

The critical responsibility of all Emergency Services Personnel is to ensure citizens are comfortable that they will, in a life-threatening situation, have available to them no less than the normal level of Emergency Service. In addition, should individuals be required to leave their homes, they must be assured that their possession will be protected over a period of time that could extend well beyond one (1) day.

2. Municipal Departmental Management Priorities

The operational priorities established for Steinbach's Departments are:

1st Protection and maintenance of the Emergency Services Communications Network assuming the loss of the Manitoba Hydro and MTS Communications Grids.

- Emergency Radio Network out of EOC
- Public Access (Direct or 911)
- Emergency Electrical Support in priority order to:
 - e) Steinbach EOC and EOC Radio Network
 - f) Steinbach Fire Department
 - g) Steinbach RCMP Detachment
 - h) Bethesda Hospital

Note: This represents, initially, the provision of minimal services in order to ensure that Steinbach's Immediate 1st Response Units can maintain their ability to address their first objective; removal of individuals from life threatening situations. Once this initial work is completed, there will be the need to expand these services to permit the EOC to begin to address the long-term issues that will arise within the Community.

2nd The provision of operational support to Institutions providing Life Assistance Services within the City of Steinbach. Of particular concern are the Community Health Care Facilities where moving clients would create a great deal of difficulty for the clients and the personnel.

The City of Steinbach Emergency Measures Plan
Book 5 – Hazard Analysis and Response Plans

Page 78 of 84

Note: Initially this represents the provision of minimal services in order to ensure that the institutions can maintain a minimal level of immediate support services to their clients. These services will have to be expanded as quickly as possible, to ensure Institutional Clients and Facilities do not become a continual drain on the Community Emergency Response System and on the Communities need for additional resources.

3rd The provision of assistance, help or security, to individuals in a Home Care or Life Monitoring System.

Note: The Critical issue here is knowing locations, primary care provider and as needed moving the individual to a better location. This information will be part of the SERHA Emergency Plan.

4th Sustaining the provision of Municipal Utility Services to the total Community.

5th The provision and establishment of Community Reception Centers in order to ensure that if required such Centers can become operational during the Emergency and made available, immediately, to the EOC and the Public.

Note: This represents, initially, the provision of minimal services in order to ensure that Emergency Social Assistance Workers can establish the Reception Center and begin to receive and provide support to members of the Public. As the timing of the event expands there will be an ever-expanding demand to provide additional resources and effort into the provision of total Reception Center Services.

6th The development of a Community Information Network under the assumption that all normal communications systems will be disrupted by the loss of Manitoba Hydro and MTS Services.

7th The planning for the evacuation of parts and/or all of the Community, as necessary in order to sustain Basic Life Support Services to citizens in a non-institutional setting.

Note: The level of evacuation will be totally dependent on the ability of the EOC to obtain or provide Utility Services to Institutions and Community Reception Centers. Without Utility Services there may be a need to undertake a total Community Evacuation.

8th The provision of property security within part and/or all of the Community depending on the need for undertaking an evacuation.

9th The development and implementation of a Community re-entry program including:

- Determination of an acceptable level of Utility Service
- Provision of all Utility Services
- Critical Stress Debriefing for Emergency Personnel, Institutional Personnel and Citizens

3. Financial Commitment for Materials

The cost of addressing a major Summer Storm Event clean up is covered within the annual Regular Operating Budget of the Corporation.

The mechanisms for providing assistance during a significant Summer Storm Event within an Emergency Measures Event are:

1. Private Property Costs, in situations where evacuation is not directed by Emergency Measures Personnel under a “State of Local Emergency”, are the responsibility of the Property Owner and addressed through their insurance provider. This includes any damages to Private Property.
2. Private Property Costs, in situations where evacuation is directed by Emergency Measures Personnel under a “State of Local Emergency” are the responsibility of the Property Owner and addressed through their insurance provider. This includes any damages to Private Property. In a case of proven negligence on the part of Emergency Measures Personnel the issue will be addressed through the Insurer of the City of Steinbach.
3. In situations where an insurance provider does not cover costs, the rules of the Province of Manitoba Disaster Assistance Fund shall apply and the City of Steinbach shall establish the personnel and the process for the making of Disaster Assistance Claims by the Citizens of the city.
4. In situations where a “State of Local Emergency” has been declared and individuals are directed to leave their place of residence essential basic requirements - food, shelter and clothing - shall be provided by the City of Steinbach under the regulations of the Manitoba Disaster Assistance Fund only under the following conditions:
 - c) The individual(s) has registered at a Steinbach Registration and Inquiry Center prior to leaving the Community; and
 - d) The individual(s) can provide a receipt for all items claimed as part of their costs of evacuation.

OR

 - c) The individual(s) remain in a Reception Center setting provided by the City of Steinbach Emergency Measures System; and
 - d) All items claimed are approved through a Voucher or Purchase Requisition signed by a member of the Emergency Measures Team with the appropriate spending authority.
5. Institutional Administrators, whether Institutional Care Providers or responsible for facilities used as Reception Centers, may make application to cover their costs to the City of Steinbach. After confirmation of how these costs will be addressed by the Provincial Departments, the City will reimburse all cost that are covered through the Manitoba Disaster Assistance Program. All costs must be substantiated as required by the Manitoba Disaster Assistance Program.

The City of Steinbach Emergency Measures Plan
Book 5 – Hazard Analysis and Response Plans

Page 80 of 84

6. All private enterprise or Community Association costs shall be paid as per the Purchase Requisition or Voucher approved by a spending authority of the City of Steinbach Emergency Measures Organizations.
7. Reimbursement to the City of Steinbach for the provision of evacuation assistance to individuals from another Municipal Corporation shall be at the 100% level as per the guidelines of the Province of Manitoba Disaster Assistance Program.

City of Steinbach

Emergency Measures Plan

Section 7 – Hazard Analysis

Institutional Facility / Multi Family / Apartment Evacuation

**The City of Steinbach
Hazard Analysis**

Institutional Facility or Multi Family/Apartment Evacuation

Nature of Hazard:

Every risk identified within the Community has the potential to cause a short-term evacuation of an Institutional Facility or a multi-family/apartment facility.

The role of EMO is to support the 1st Response Units through organizing transportation, as needed, Registration and Enquiry and support. Much of this support will be in the form of assistance to Institutional Evacuation Plans.

SITE EVACUATION PLAN

STEINBACH E.S.S & HEALTH TOTAL EXTERNAL EVACUATION PLAN

TYPE – SHORT TERM UNDER 24 HOURS

Relating to fire, power failure, structural damage, bomb or hostage situation and any other circumstances that threaten life.

When a local emergency has been called, the E.O.C. will engage Steinbach E.S.S. Team to implement the City of Steinbach Site Evacuation Plan.

1. STEP ONE

The E.S.S. Director will establish the location of the Reception Centre and initiate the fan out call system to contact E.S.S. Team.

All Site External Evacuations will relocate to:

1st Choice Per Institutional Evacuation plan

2nd Choice Per Institutional Evacuation plan

In the case of an apartment or multi-family dwelling, the E.S.S. Director will determine the location of the Evacuation / Reception Centre.

2. STEP TWO

Transportation of residents will be co-ordinated by E.S.S.

1st Choice See Emergency Plan Transportation section

2nd Choice School Buses
Hanover School Division – see EOC Transportation

The Site Commander will communicate as to when and where the transportation will be required through E.S.S.

Where institutions are involved, the nurse in charge or housing authority will co-ordinate loading of evacuees at designated locations.

3.STEP THREE

The site evacuees will be transported to the designated reception location.

4.STEP FOUR

E.S.S. R & I. Team, established by Red Cross (Loins Club), will register all evacuated residents at the Reception Centre.

The R & I Team will establish an enquiry phone for external registration and incoming calls. This number will be made available through E.S.S. for public enquiries.

The housing management from institutional or nurse-in-charge will work through the Reception Centre Manager to meet the needs of the evacuated residents in the short-term stay at the Reception Centre.

5.STEP FIVE

Site Commander will communicate to E.S.S. Director as to re-entry instructions. E.S.S. Director shall co-ordinate the re-entry through the Reception Centre Manager and Transportation for return to the institution or multi-family dwelling.

6.STEP SIX

Post Disaster Debriefing for Volunteers and staff (Set-up Meetings):

- Documentation of financial matters
- Inventory and re-supply
- Thank-you letters to all Volunteers
- Return facilitators to normal operation
- Workshop on Financial Assistance Preparation

E.S.S. Plan (meeting with team members):

- Update plan and note problem area
- Final report to Council

A listing of Institutional Facilities, Multi Family units, Apartments, etc. is located in the Evacuation section of the Emergency Plan.